



Update on IANA

Barbara Roseman
Internet Assigned Numbers Authority



IPv6 for the root servers

- 6 of the 13 servers added AAAA addresses (4 February 2008)
- Small increase in load on servers
- No known problems
- Enhances IPv6 deployment capabilities
- Further details available at:

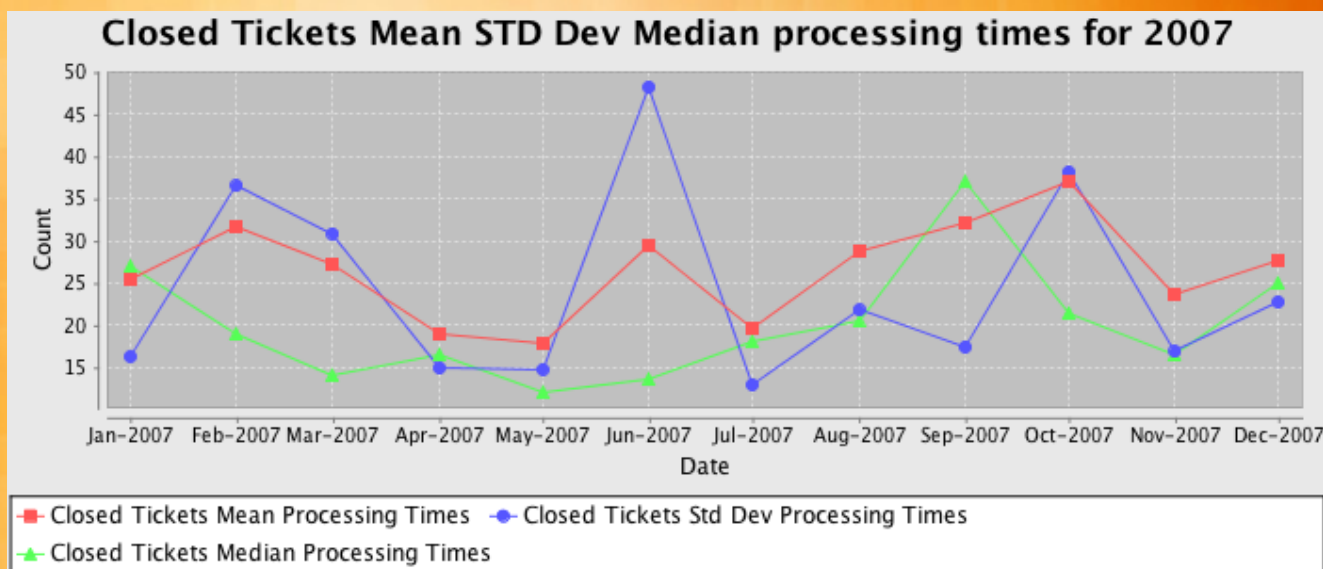
<http://www.iana.org/reports/root-aaaa-announcement.html>

DNSSEC update

- IANA continues to offer testbed of signed root zone
<https://ns.iana.org/dnssec/root.zone.signed>
- Gaining operational experience in handling key-signing keys and zone-signing keys
- Transitioning .arpa and in-addr.arpa publication to ICANN
 - IANA will sign .arpa and in-addr.arpa after the transition

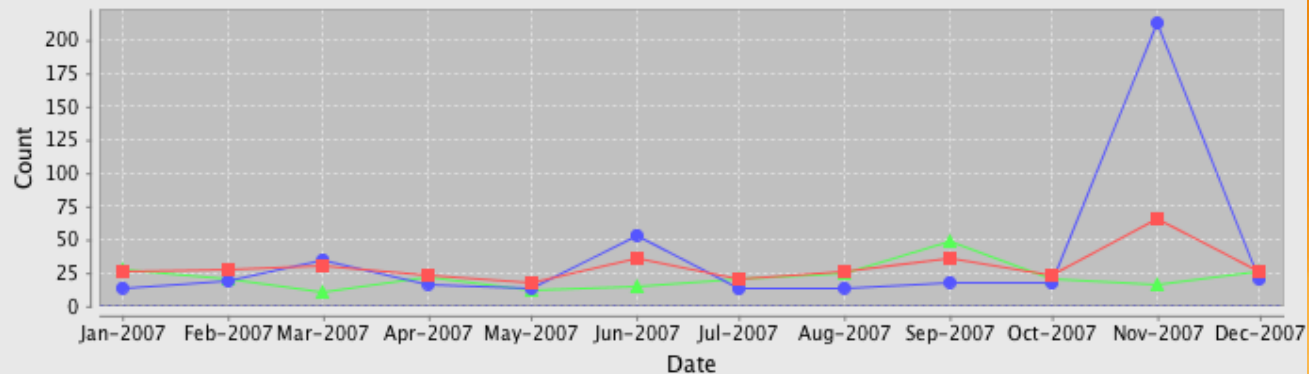


Processing trends for root zone management



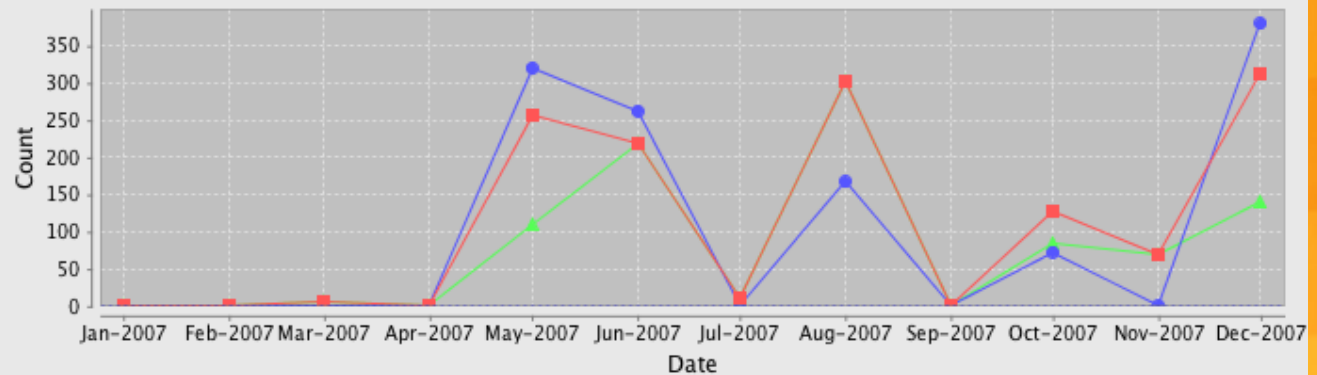
Processing trends: name server change requests vs. more complex requests

Name Server change Closed Tickets Mean STD Dev Median processing times for 2007



■ Closed Tickets Mean Processing Times
 ● Closed Tickets Std Dev Processing Times
▲ Closed Tickets Median Processing Times

Redelegation/Delegation Tickets Mean STD Dev Median processing times for 2007



■ Closed Tickets Mean Processing Times
 ● Closed Tickets Std Dev Processing Times
▲ Closed Tickets Median Processing Times

Trends analysis

- Routine requests done faster
- Remaining tickets on average taking longer
 - Redelegations etc. take more due diligence, often more contentious. Building number due to outreach efforts.
- We will study underlying causes and report back
- Propose splitting monthly reporting into “regular” and “irregular”/“exceptional”
 - Need to define the latter — redels and third-party impacting?



Update on services

- Service level targets for root zone requests
 - Working on compiling historical data (see previous graphs)
 - Drafting a set of service level targets for discussion
- RZM System in beta testing
 - Compliance testing for production deployment
 - Security audit of software



Protocol and Parameter Registries

- Project to xml-ize the registries
 - Coordinated with IETF xml experts
 - All new registries created in xml format
 - Updating older registries on planned schedule
- Monthly statistics report
 - Additional to dashboard

<http://beta.iana.org/about/performance/ietf-statistics/>

Thank You!

Barbara Roseman

barbara.roseman@icann.org

Kim Davies

kim.davies@icann.org

