



# IANA Functions Update

Elise Gerich

ICANN, VP IANA, | ICANN 56 | June 2016

# Agenda

1

Performance  
KPIs

2

Monthly Root  
Zone Data  
Report

3

Parallel  
Operations  
Results

4

3<sup>rd</sup> Party Audits

5

Staffing

The background of the slide is a dark blue color. Overlaid on this is a stylized world map. The map is formed by a complex network of small white dots connected by thin white lines. The dots are of varying sizes, and the lines form a dense web that outlines the continents. The overall effect is that of a global network or data flow.

# Performance KPIs

# Root Zone File & WHOIS Database Change Request KPIs - Current

## Key Performance Indicators

Metric	Target	Actual	Target Met
<b>Timeliness</b> — End-to-end processing for changes pertaining to routine maintenance of delegated TLDs (such as NS changes, DS changes, point-of-contact changes, and other administrative updates) are performed within 21 days.	80%	90.0%	✓
<b>Accuracy</b> — The requests that have passed validation are implemented correctly at the conclusion of a change request.	100%	100%	✓

Monthly reporting of these KPIs is posted on [iana.org/performance](http://iana.org/performance). The example above is from the May 2016 report.

# Delegation and Redelegation for ccTLDs KPIs

## Key Performance Indicators

Metric	Target	Actual	Target Met
<b>Timeliness</b> — End-to-end processing times for changes pertaining to delegation or redelegation of country-code top-level domains are within 120 days.	50%	100%	✓
<b>Accuracy</b> — The requests that have been approved by the applicant are implemented correctly at the conclusion of a change request.	100%	100%	✓

Monthly reporting of these KPIs is posted on [iana.org/performance](http://iana.org/performance). The example above is from the May 2016 report.

# CWG Service Level Expectations ( SLEs)

- CWG defined metrics to be collected
- March 2016 ICANN completed instrumentation in RZMS to collect metrics defined by CWG
- Development of real-time dashboard underway to present the data in a user friendly way

The background of the slide is a dark blue color. Overlaid on this is a stylized world map. The map is not a solid shape but is composed of a complex network of white lines connecting numerous small white circular nodes. These nodes and lines are distributed across the entire surface of the map, creating a mesh-like or network-like appearance. The overall effect is that of a global network or data flow.

# Monthly Root Zone Data Reports

# Monthly Root Zone Database Reports

- Reports have been published monthly since September 2013
- Identifies each root zone file and root zone WHOIS database change request completed within the month
- As of April 2016 report includes pending delegation and redelegation requests



# Sample of the Pending Delegation Report

## Pending Delegation and Transfer Activity

This report described currently pending requests to delegate or transfer a top-level domain in the DNS Root Zone as of 1 June 2016. It describes requests upon which ICANN staff have performed an initial review upon, but have not completed the evaluation and implementation process.

### TLD Delegations In Processing

As at 1 June 2016

Date of submission	TLD	Proposed Party	Current status
2016-05-27	alstom	ALSTOM	Pending
2016-05-31	audible	Amazon Registry Service, Inc.	Pending
2016-05-31	chintai	CHINTAI Corporation	Pending
2016-05-23	cookingchannel	Lifestyle Domain Holdings, Inc.	Pending
2016-05-31	deal	Amazon Registry Service, Inc.	Pending



# Parallel Operations Results

# Background – Parallel Operations

- Post-NTIA Stewardship proposal defines elimination of authorization of root zone changes by NTIA
- ICANN and Verisign established a parallel root zone test environment to run in parallel with the production root zone management system
- As of April 6, 2016, ICANN and Verisign began a 90 day testing period to verify continuity of integrity of the data in the root zone file

# Parallel Operations Status

- Webpage with details of the parallel testing and two monthly reports
  - <https://www.icann.org/en/stewardshipimplementation/root-zone-management-system-parallel-testing>
- Daily comparison reports published by Verisign
  - <http://www.verisign.com/rzms-parallel-ops/index.html>

A world map where the continents are defined by a complex network of white dots and thin white lines, resembling a social or data network. The background is a solid dark blue color. The text '3rd Party Audits' is overlaid in white on the left side of the map.

# 3<sup>rd</sup> Party Audits

# Third Party Systems Audit

- ⦿ Successful completion of the Service Organization Control (SOC) 3 audit of the RZ KSK System.
  - ⦿ Completion of 6<sup>th</sup> annual SOC3 audit
- ⦿ Completed the Service Organization Control (SOC) 2 audit of the IANA Registry Maintenance Systems with no exceptions.
  - ⦿ 3<sup>rd</sup> year of SOC2 annual audit
- ⦿ Audits are conducted annually and help us to constantly monitor and improve our systems
- ⦿ <https://www.iana.org/about/audits>

The image features a dark blue background with a white network of dots and lines that forms a world map. The dots are of varying sizes and are interconnected by thin white lines, creating a complex web that outlines the continents. The word "Staffing" is centered in the middle of the map in a bold, white, sans-serif font.

# Staffing



**Elise**



**Kim**



**Naela**



**Michelle**



**Marilia**



**Sabrina**



**Amanda**



**Selina**



**Paula**



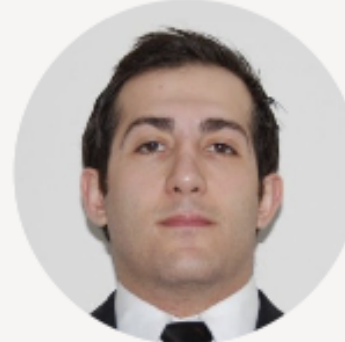
**Shaunte**



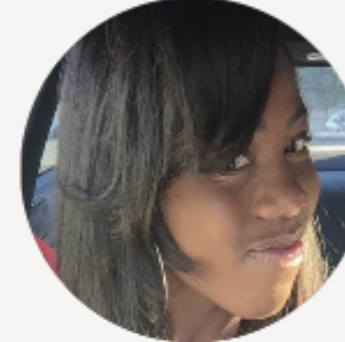
**Andres**



**Punky**



**Ali**



**Jennifer**



A world map where the continents are defined by a complex network of white dots and thin white lines. The dots vary in size, and the lines connect them to form a web-like structure. The background is a solid dark blue color.

**Thank You**