

**Eric
Garcetti**
#lamayor



LOS ANGELES



**A CITY THAT CONTINUOUSLY
ADAPTS TO THE FUTURE.**



1800's

the train made
the city possible

1920's

oil and the automobile
recreated the city



1924

first traffic
management system
anywhere





1969
the internet was
created at UCLA



1983
cell phones arrived
in Los Angeles



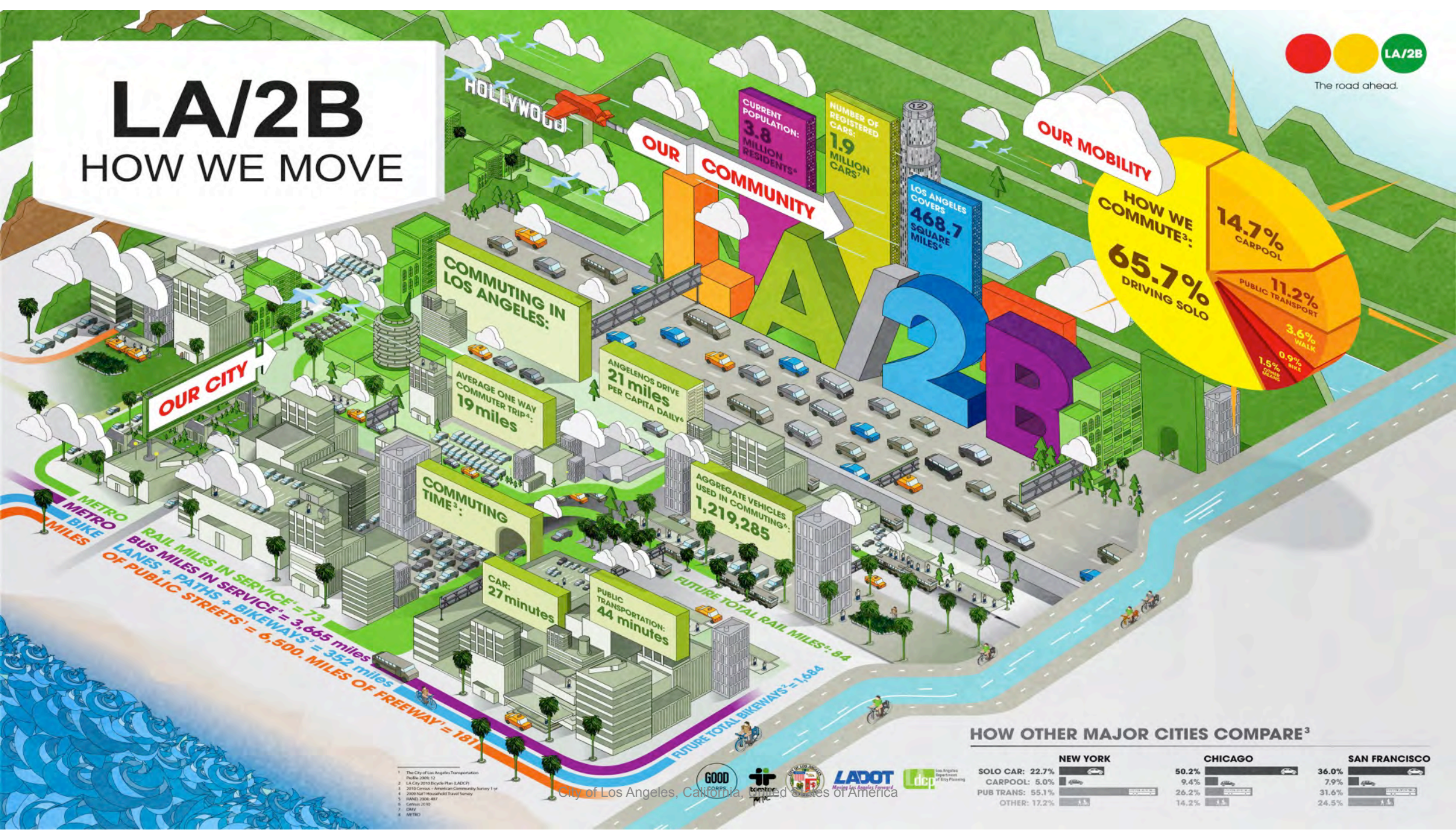
1984
ATSAC started in LA

Automated Traffic Surveillance and Control System (ATSAC)

- Traffic management across the City.
 - ~4,500 intersections
 - LOS FELIZ Boulevard at ROWENA Avenue had 76,000+ vehicle crossings in a single day.*
 - Measured intersections had an average of more than 18,000 vehicle crossings daily.



LA/2B HOW WE MOVE



OUR COMMUNITY

CURRENT POPULATION:
3.8 MILLION RESIDENTS*

NUMBER OF REGISTERED CARS:
1.9 MILLION CARS*

LOS ANGELES COVERS
468.7 SQUARE MILES*

OUR MOBILITY

HOW WE COMMUTE³:
65.7% DRIVING SOLO

14.7% CARPOOL

11.2% PUBLIC TRANSPORT

3.6% WALK

0.9% BIKE

1.5% OTHER

COMMUTING IN LOS ANGELES:

AVERAGE ONE WAY COMMUTER TRIP⁴:
19 miles

ANGELENOS DRIVE **21 miles** PER CAPITA DAILY⁶

COMMUTING TIME³:

CAR: 27 minutes

PUBLIC TRANSPORT: 44 minutes

AGGREGATE VEHICLES USED IN COMMUTING⁶:
1,219,285

FUTURE TOTAL RAIL MILES⁷: **94**

FUTURE TOTAL BIKEWAYS⁸: **1,684**

OUR CITY

METRO BIKE LANE MILES: **1**

RAIL MILES IN SERVICE¹: **73**

BUS MILES IN SERVICE²: **3,665 miles**

LANES + PATHS + BIKEWAYS³: **352 miles**

OF PUBLIC STREETS¹: **6,500. MILES OF FREEWAY⁴ = 181**

HOW OTHER MAJOR CITIES COMPARE³

	NEW YORK	CHICAGO	SAN FRANCISCO
SOLO CAR: 22.7%	50.2%	36.0%	
CARPOOL: 5.0%	9.4%	7.9%	
PUB TRANS: 55.1%	26.2%	31.6%	
OTHER: 17.2%	14.2%	24.5%	

1. The City of Los Angeles Transportation Profile 2006, 12
 2. LA City 2010 Bicycle Plan (LADCP)
 3. 2010 Census - American Community Survey 1 yr
 4. 2009 NHF Household Travel Survey
 5. RAND, 2008, 487
 6. Census 2010
 7. DMV
 8. METRO

1997

the hybrid car arrives



2007

the iPhone arrives



2013

LED streetlights installed across the city



2013

electric cars in mass production



smart meters start (52,000) in LA (DWP)



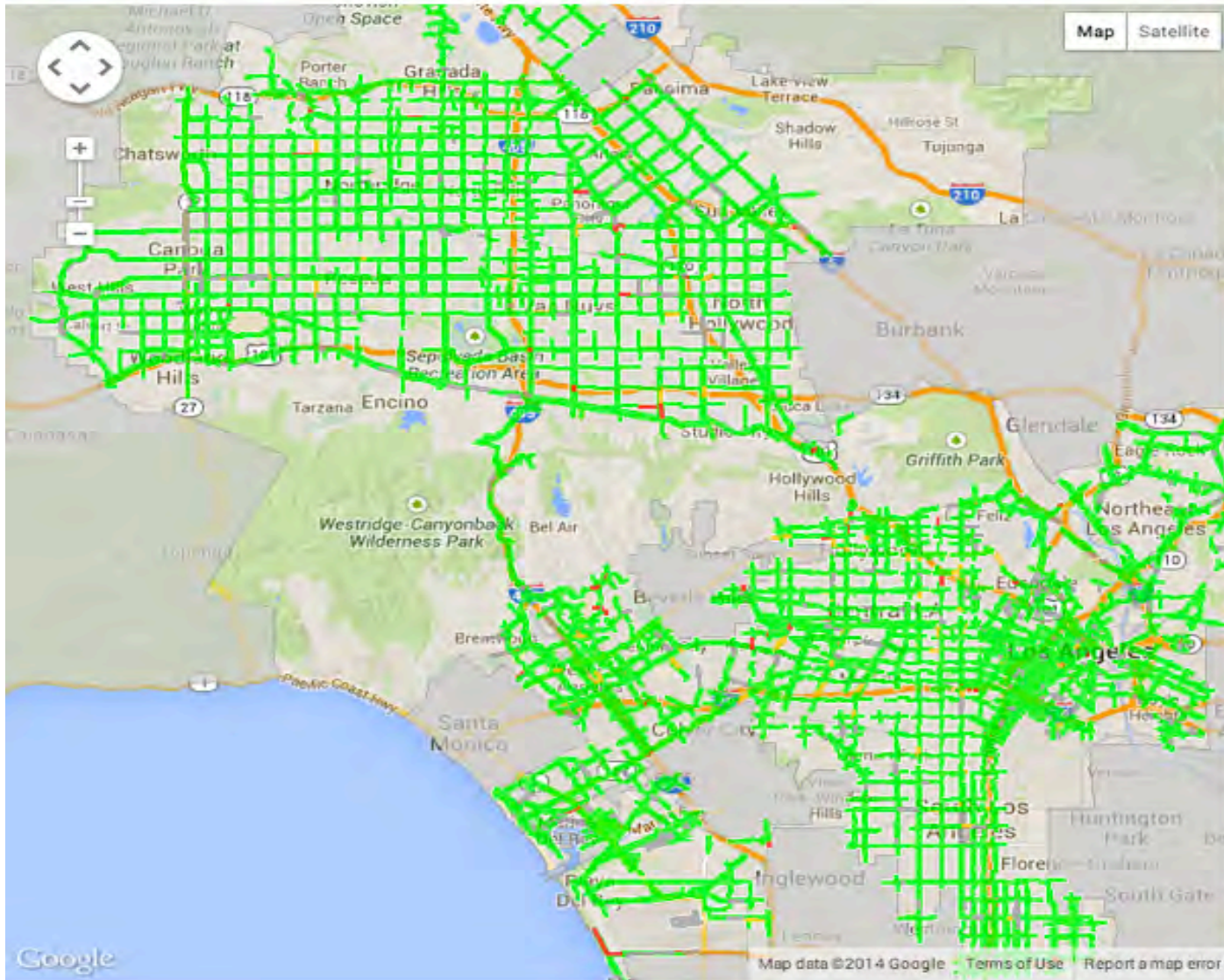
2014

Streetlights + EV Charging



Internet of Things (IoT), context awareness.





TRAFFIC ADVISORY
 Crenshaw LRT Project >>
 Young Armenians Walk 04/24 >>
 Sepulveda Roadwork 3/14-4/28 >>

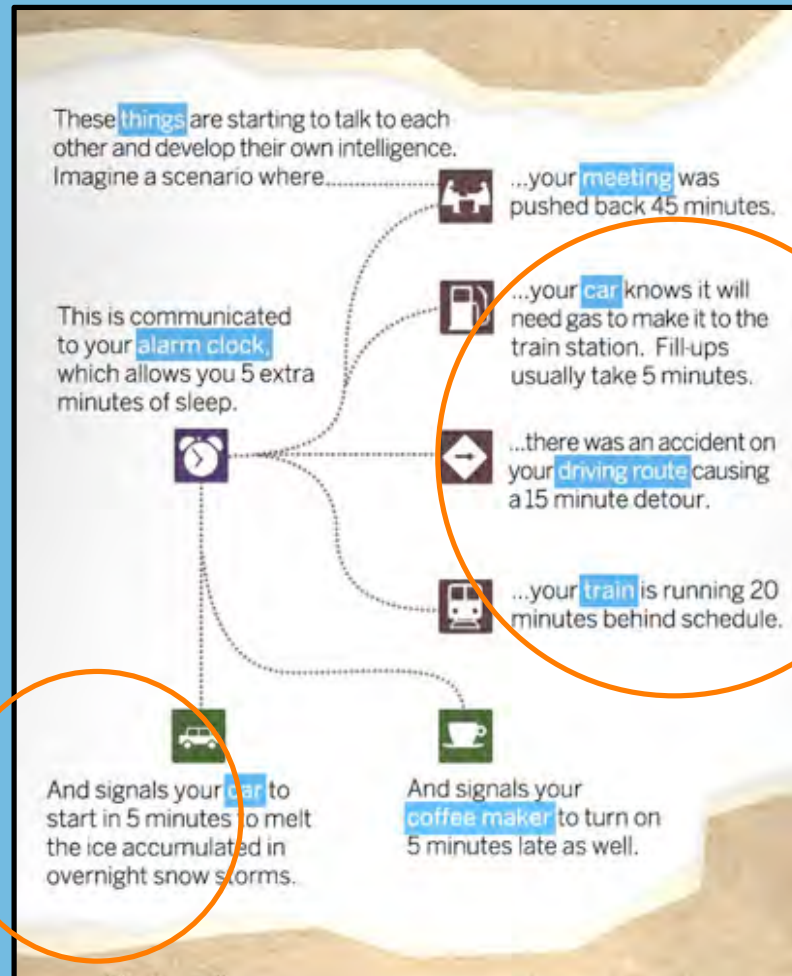
AREA MAPS

- Chatsworth
- Crenshaw
- Downtown
- Hollywood
- LAX
- Mid-City
- North Hollywood
- Northeast LA
- Northridge
- San Pedro
- Sepulveda Pass
- Silver Lake
- South LA
- Sylmar
- Van Nuys
- Venice
- Warner Center
- West LA

Map/Traffic Legend

■ 0-10 mph	■ 10-20 mph
■ 20+ mph	■ Unavailable

It Takes an Infrastructure

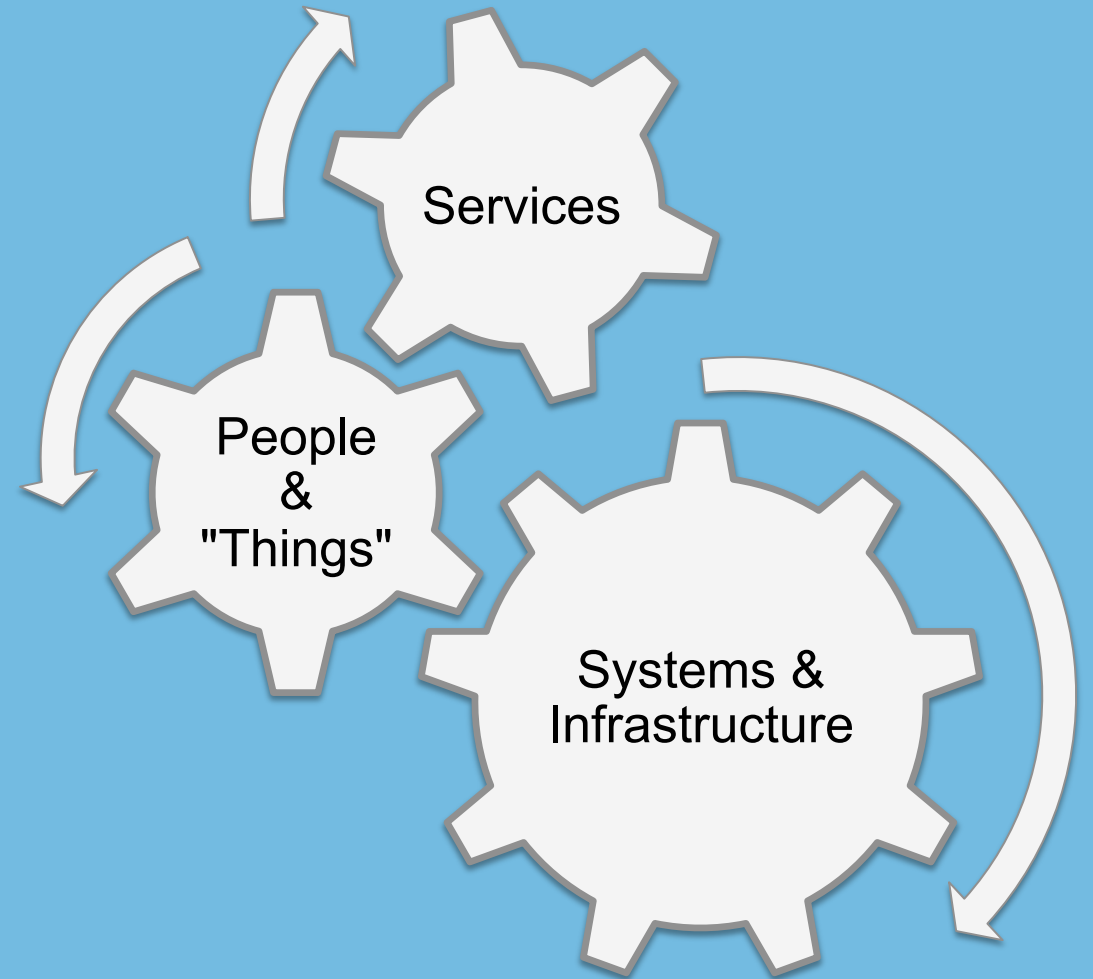


Not relevant in LA!

Are these APIs with city services?

Challenges and Opportunities

- **People**
 - Culture
 - Digital Divide / Inclusion
 - Identity
 - Authentication
 - Payments
- **Things, Robots, and Vehicles**
 - Connected
 - Autonomous
 - Managed
- **Connectivity**
 - Licensed / unlicensed
- **Security**
- **Privacy**





LA/2B OUR STREETS. OUR CITY.

In every direction Los Angeles lives through its streets. Let's take a look at Wilshire, a street that connects us all from the ocean to Downtown and everywhere in between. From our neighborhoods and businesses to the cultures and the people, our streets are what makes LA, LA.

44 MINS BY CAR (WITHOUT TRAFFIC)
121 HRS BY BUS (MAKING 96 STOPS)
140 HRS BY BICYCLE
520 HRS BY FOOT (CROSSING 240 STREETS)

TO TRAVEL THE CORRIDOR

HOLLYWOOD

330 MOTION PICTURE PRODUCTIONS

39 ART AND CULTURAL CENTERS

MIRACLE MILE

15.83 MILES OF STREET

HANCOCK PARK

WILSHIRE PARK

KOREATOWN

WESTLAKE

7 TRANSIT AGENCIES

64 BUS ROUTES

1491 DAILY BUSES

65,516 DAILY RIDERS

WEST LA

912 STREET LIGHTS

ONE WILSHIRE
80FT AVERAGE BUILDING HEIGHT ON WILSHIRE

1.90 MILLION SQUARE FEET OF SIDEWALK

18FT AVERAGE BUILDING HEIGHT IN LOS ANGELES

13,878 BUSINESSES ON WILSHIRE

TRAFFIC LIGHTS



COMPUTER EXPRESS
Culver CITYBUS DASH



OVER 10,000 JOBS PER MILE

76 NUMBER OF NATIONALITIES OF WILSHIRE RESIDENTS

143 INDEPENDENT RESTAURANTS & CAFES

120,000 CARS busiest stretch BETWEEN VETERANS & THE 405

1719 RETAIL STORES

191 METERED PARKING SPOTS

\$46,820,785,188.75 WILSHIRE TAX REVENUE

LARCHMONT

\$143K WESTWOOD

\$55.K LOS ANGELES COUNTY

\$18.K DOWNTOWN

WILSHIRE MEDIAN HOUSEHOLD INCOME

\$2,414.88 COLLECTED EACH PAY

- SOURCES
- 1 LA TIMES NEIGHBORHOOD MAP
 - 2 CENSUS 2000
 - 3 CENSUS BLOCK 265100
 - 4 CENSUS BLOCK 207710
 - 5 LEAD, CITY OF LA ONLY 2010 ACS
 - 6 CITY OF LA OFFICE OF FINANCE, 2010
 - 7 LADCP 2012, City of Los Angeles, California, United States of America
 - 8 LADCP HIS; CITY OF LA ONLY
 - 9 GOOGLE MAPS + LADCP HIS
 - 10 LADOT 2012



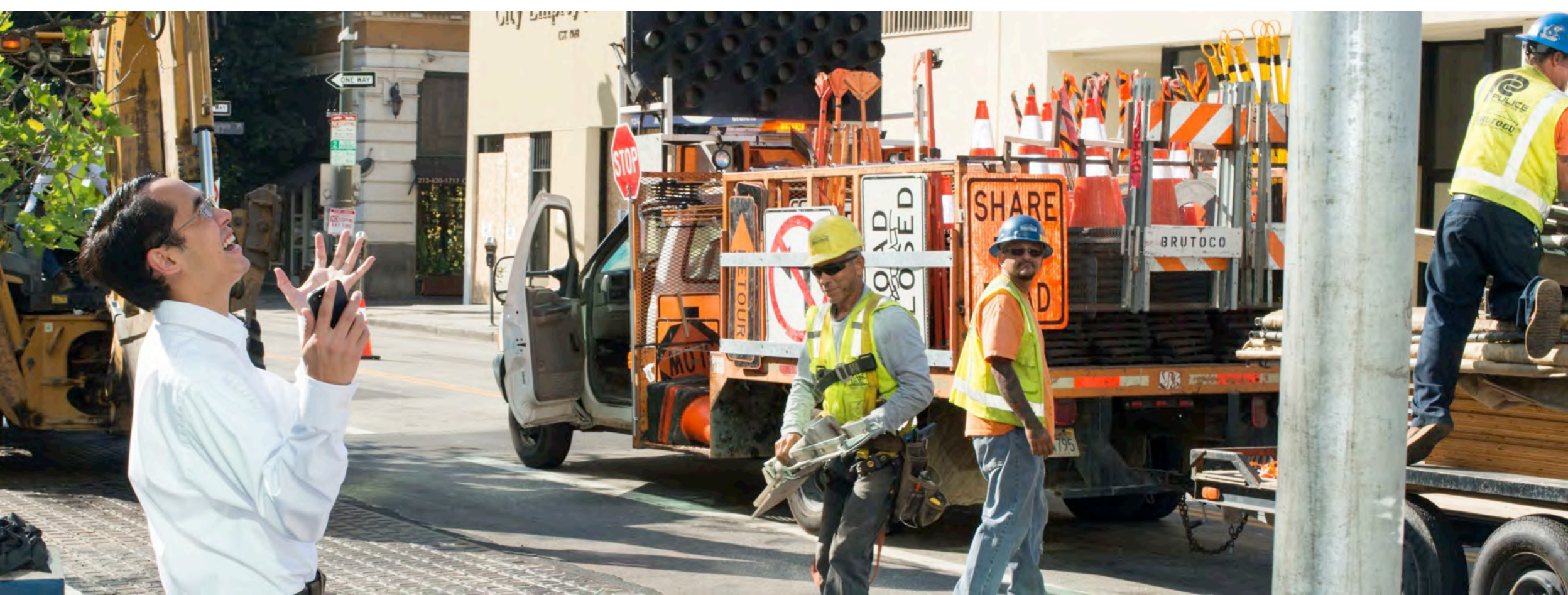
work.briangessett.com





groundwork
ICED & HOT
**ORGANIC
COFFEE**
AND FINE TEAS

City of Los Angeles, California, United States of America





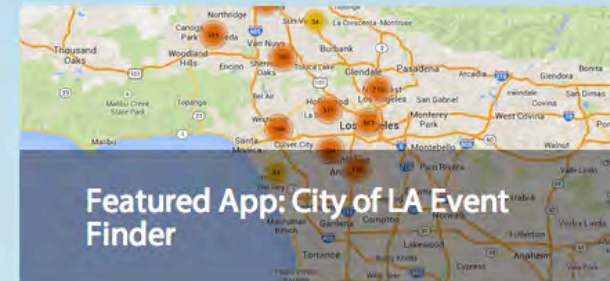
City of Los Angeles, California, United States of America



Back to Basics: Performance Metrics



Mayor's Executive Directive on Open Data



Featured App: City of LA Event Finder

Search Data...

A Safe City

Public Safety Data

A Livable And Sustainable City

Livability Data

A Prosperous City

Economic Data

A Well Run City

Government Efficiency Data

Developers

Developer Resources

Welcome to DataLA, the open data portal for the City of Los Angeles. Here you will find data to conduct research, develop web, online, and mobile applications, and generally learn more about Los Angeles. This site allows you to subscribe to changes in datasets, request new datasets, and participate in discussions with other users. We look forward to seeing what you do with DataLA.



US Open Data (data.gov)

The home of the U.S. Government's open data Here you will find data, tools, and resources to conduct research, develop web and mobile applications, design data visualizations, and more.

Tweets

Julio E. Oñate L. @JulioOate 4m
@roxanasilvach ha escrito: El mundo esta cambiando la forma de hacer gobierno con #OpenData y #OpenGovernment.

A Livable and Sustainable City

Getting LA Moving: Reducing Car Trips and Increasing Active and Public Transit

Vehicle Miles Traveled (Daily) [Explore the data >](#)

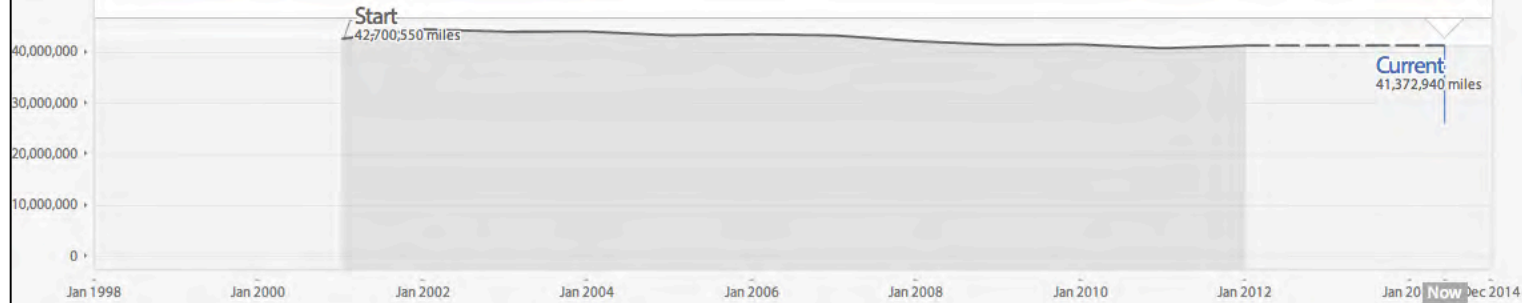
41,372,940 miles

Current as of Jan 2012



Measuring

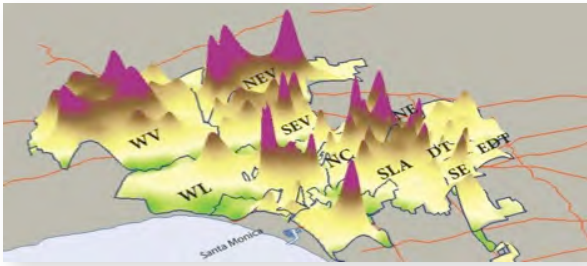
Hide chart



Daily Vehicle-miles traveled (VMT) is an average of the total length of travel by all vehicles each day in the City of Los Angeles. This estimate is generated annually by the California Department of Transportation and reported in its California Public Road Data Publication.



Wasteshed Modeling



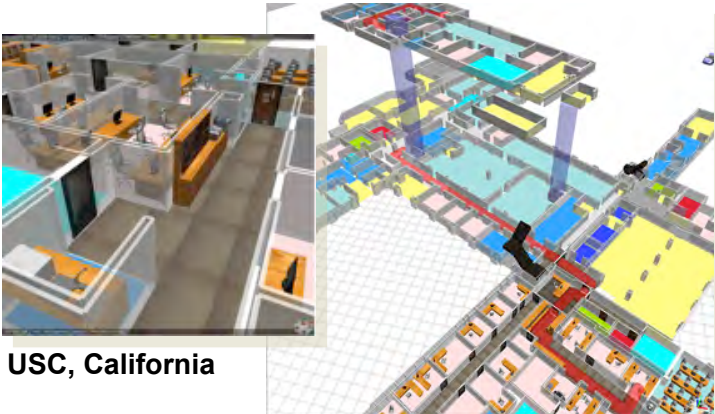
Los Angeles, California

Indoor Traffic Monitoring



California

Evacuation Planning



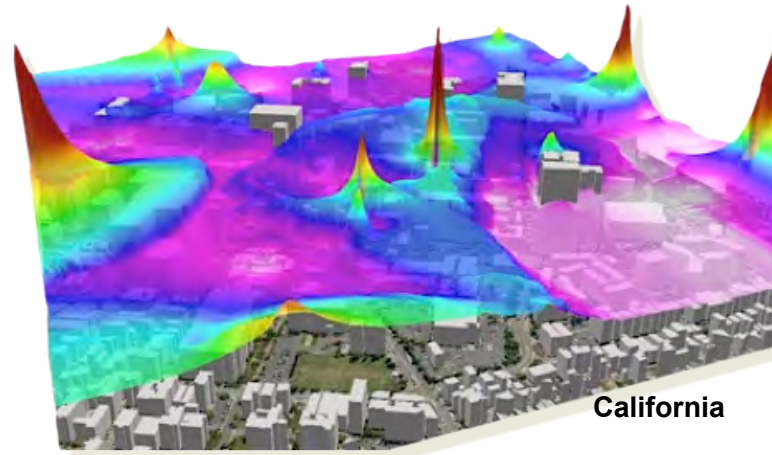
USC, California

Neighborhood Planning



California

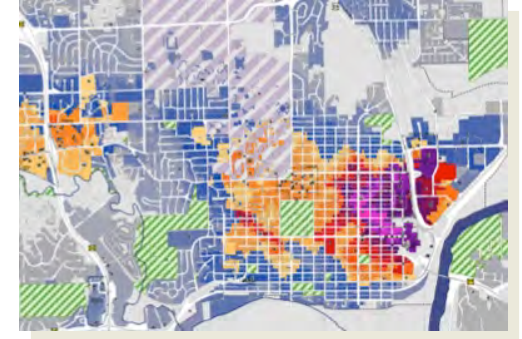
Air Quality



California

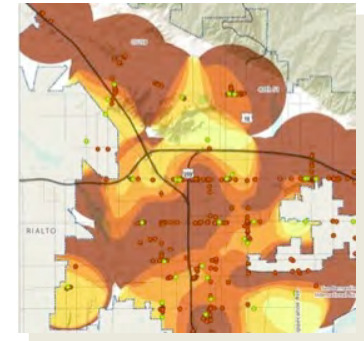
City of Los Angeles, California, United States of America

Walkability Assessment



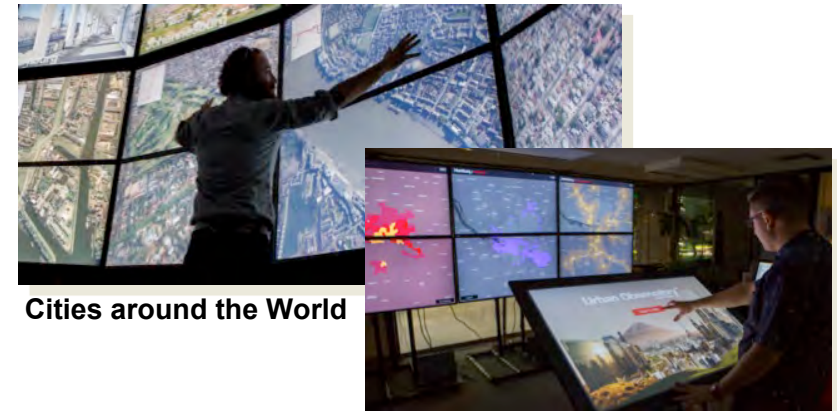
New York

Healthy Food Access



California

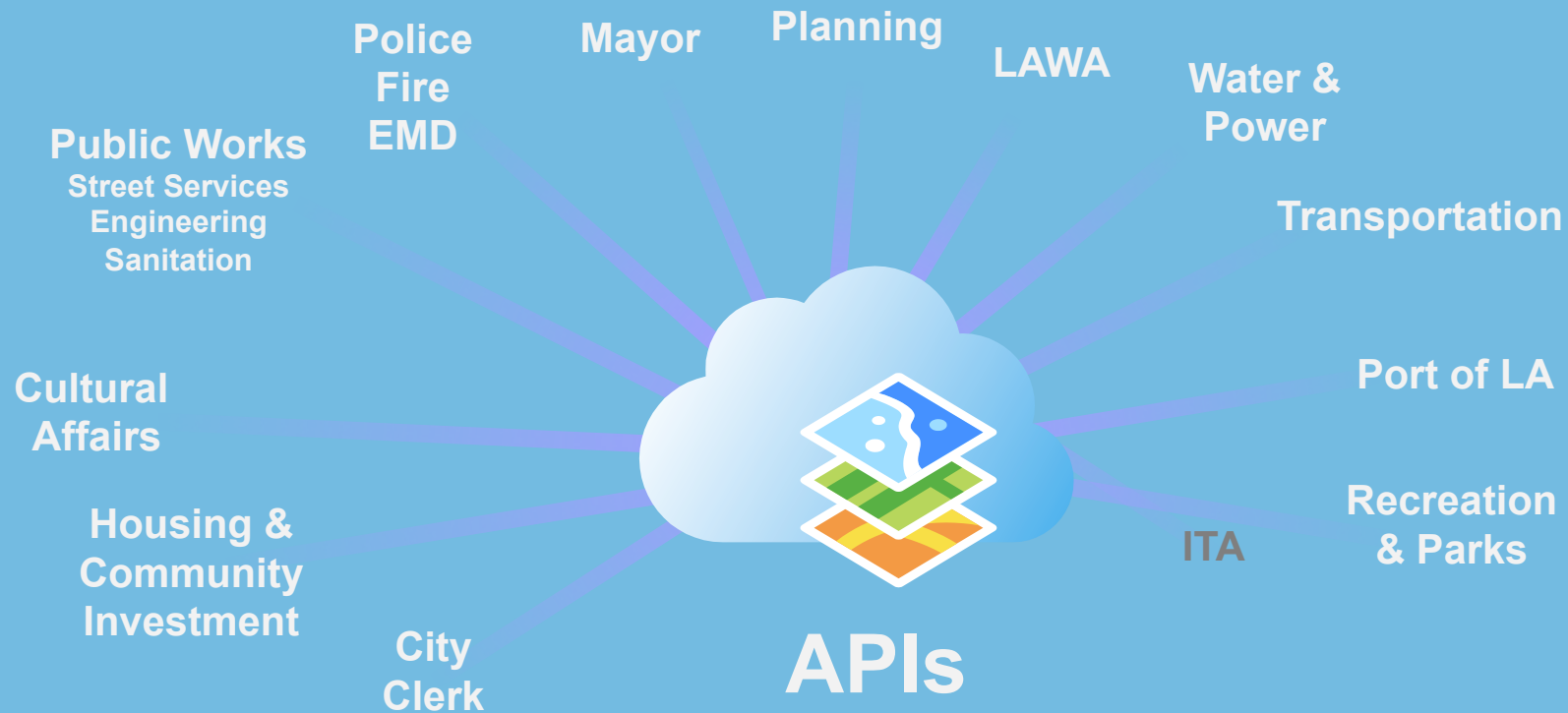
Urban Observatory



Cities around the World

City of Los Angeles

- 40+ departments, 200+ APIs



2015

connected cars?



the city in an app?



2016

autonomous cars?

**Eric
Garcetti**
#IamMayor



Thank you

Peter Marx

Chief Innovation and Technology Officer

City of Los Angeles

peter.marx@lacity.org