



WHOIS Accuracy Reporting System (ARS): Phase 1 Results Webinar | 26 August 2015

ICANN GDD Operations
NORC at the University of Chicago

Webinar Agenda

1

WHOIS ARS
Background

2

Phase 1:
Timeline and
Process

3

Phase 1:
Sample Design
and Information

4

Phase 1:
Results and Major
Findings

5

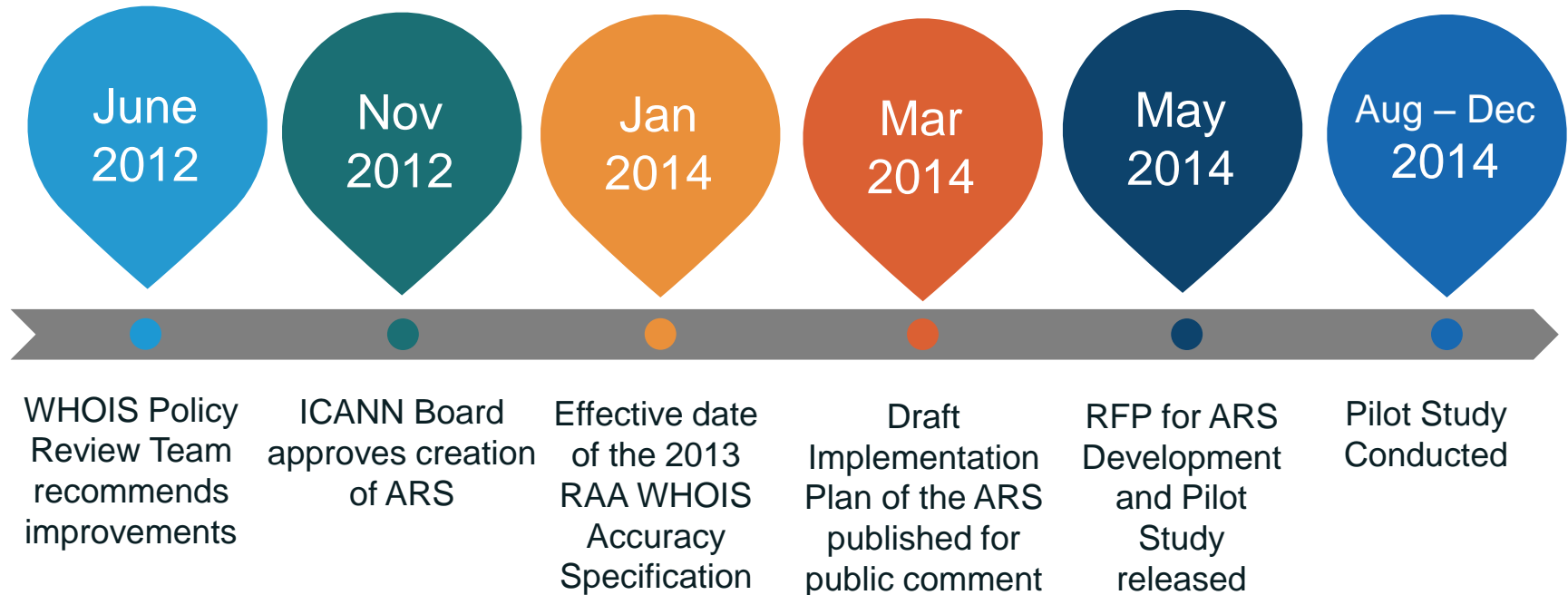
Next Steps:
Phase 1 and
Phase 2

6

Question &
Answer Session

WHOIS ARS Background

WHOIS ARS Background



WHOIS ARS Implementation

0

Pilot (Public Comment Report Completed March 2015)
“Proof of Concept”: Tested processes for data collection and validation

1

Phase 1: *Syntax Validation*
Is the record correctly formatted?
Report: 24 August 2015

2

Phase 2: *Operational Validation*
Does the email go through, phone ring, mail deliver?
1st Report: December 2015; 2nd Report: June 2016

3

Phase 3 TBD, if at all: *Identity Validation*
Is the contacted individual responsible for the domain?

Opportunities for Improvement from the Pilot

Pilot was successful as a proof of concept. Two major areas of learning:

Criteria

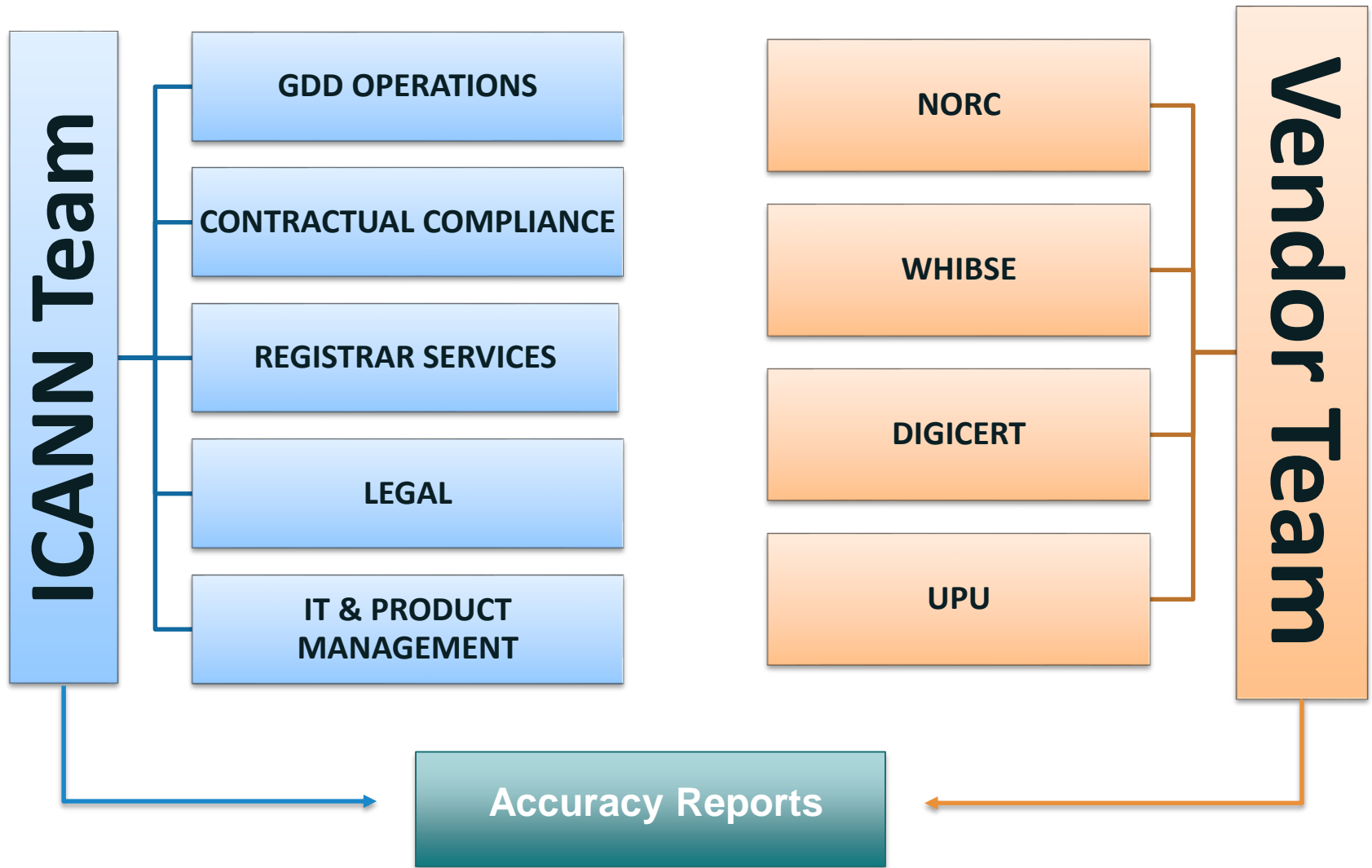
- Align to RAA
- Respect effective date
- Registrant, Tech & Admin contacts

Reporting

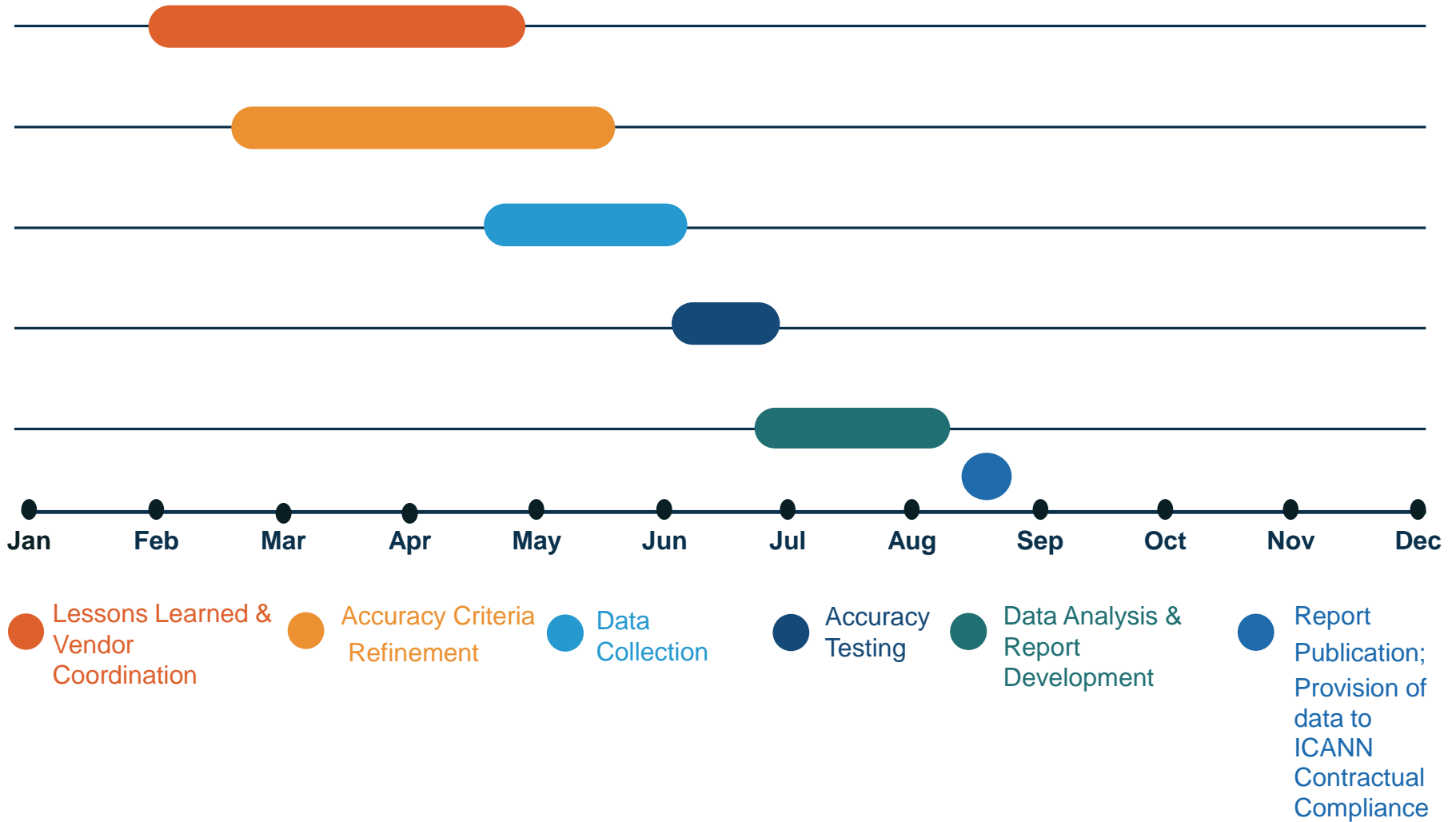
- Statistical significance
- Reasons for inaccuracy
- Actionable data

Phase 1 Process and Timeline

Phase 1 Cross-Functional Team



Phase 1 Timeline





Phase 1

Sample Design and Testing Criteria

WHOIS ARS Phase 1 Demographics

gTLD Population At Time of Sample (April 2015)

Records in gTLDs	Total gTLDs	2009 RAA*	2013GF RAA*	2013 NGF RAA*	New gTLDs	Prior gTLDs
157m	610	3.5%	65.7%	30.8%	3.15%	96.85%

100k Sample

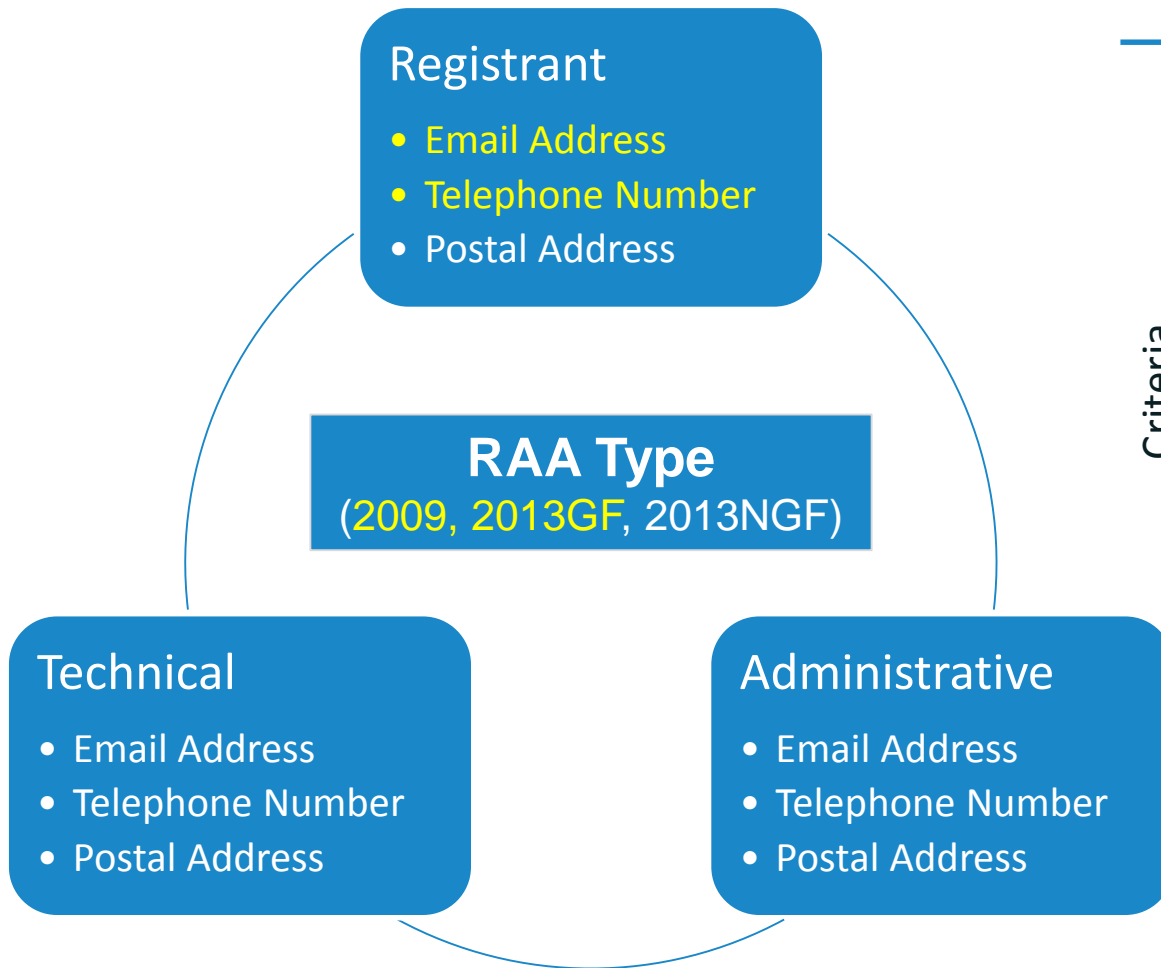
AFR	LAC	EUR	APAC	N.A.	2009 RAA	2013GF RAA	2013 NGF RAA	New gTLDs	Prior gTLDs
.07%	3%	23%	24%	49%	3%	51%	46%	25%	75%

10k Sub-sample

AFR	LAC	EUR	APAC	N.A.	2009 RAA	2013GF RAA	2013 NGF RAA	New gTLDs	Prior gTLDs
7%	18%	19%	21%	35%	18%	44%	38%	20%	80%

* Weighted estimates from 100k sample

Phase 1 – Contact types, modes, and testing criteria



- Criteria listed in Appendix A

Criteria
Examples

Does the email address contain an “@”?

Does the telephone number have a country code?

Does the postal address include an identifiable country?

Phase 1 – Report Highlights

Accuracy Statistics by Subgroup

- ⊙ Phase 1 Report provides accuracy rates for:
 - The gTLD space, by region and in total
 - New gTLDs compared to Prior (legacy) gTLDs
 - RAA Type (2009, 2013GF, 2013NGF)
- ⊙ Data within 95% confidence intervals, $\leq \pm 5\%$ margin of error

Report describes why records are inaccurate

- ⊙ All domains evaluated against 2009 RAA requirements
- ⊙ Appendix C provides results on 2013NGF domains
- ⊙ Detailed tests enable us to know why a record is inaccurate



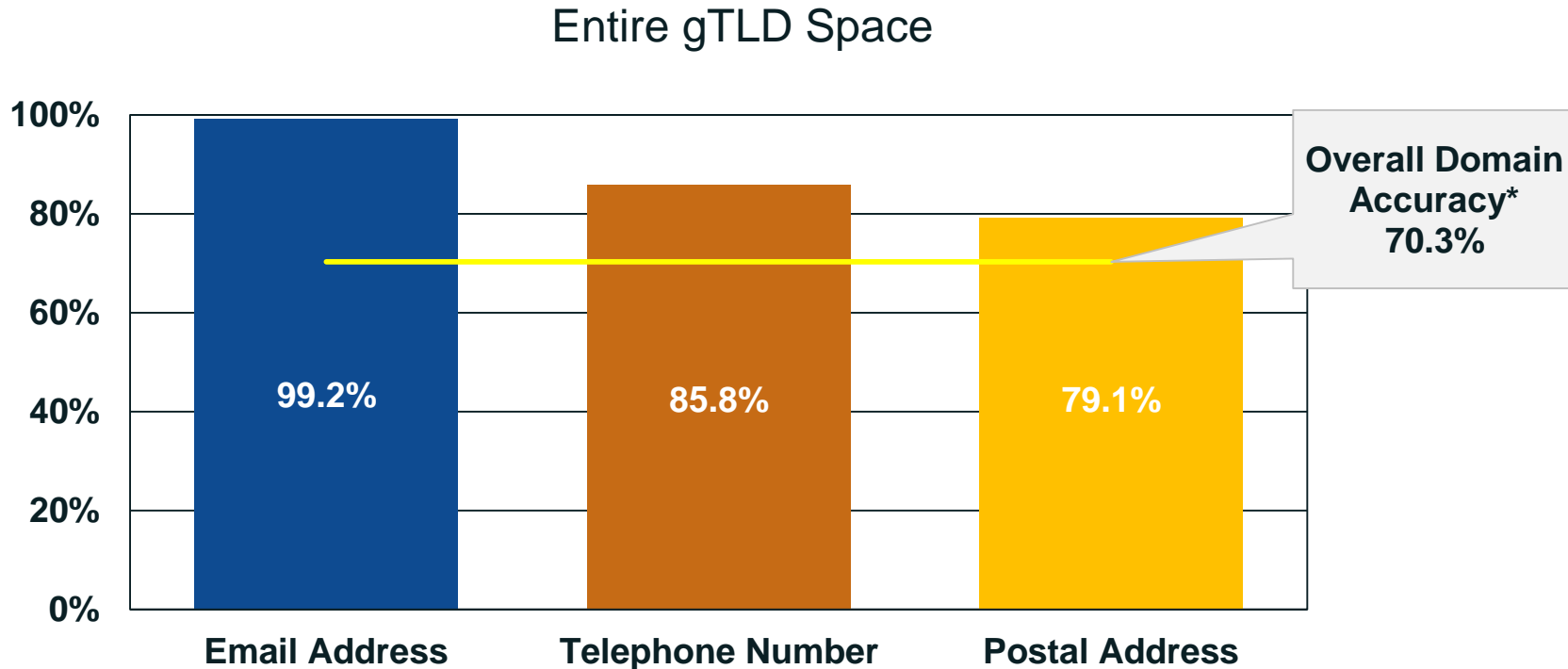
Phase 1

Results and Major Findings

Phase 1 – Summary of Findings

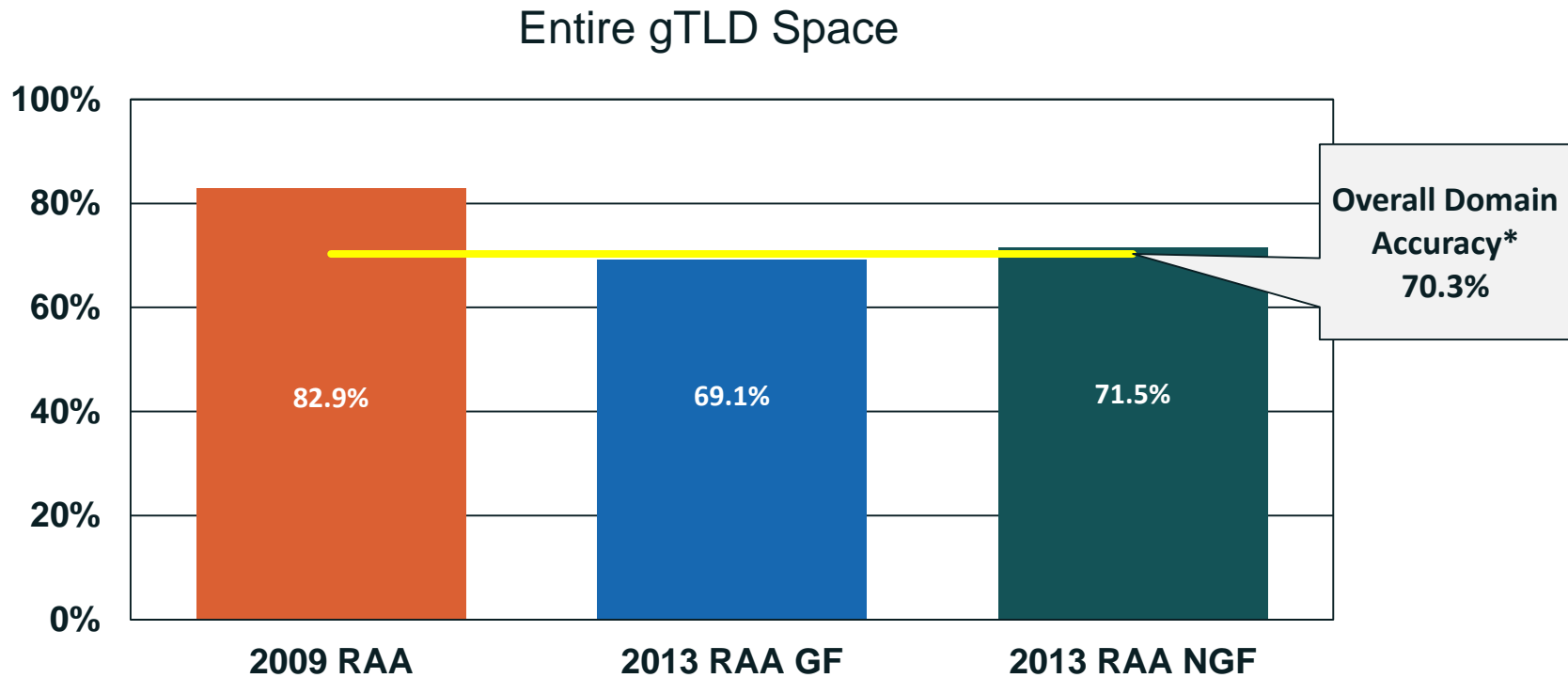
- ⦿ Accuracy very similar for Registrant, Administrative, and Technical
- ⦿ Email accuracy very high; postal address lowest (most complex)
 - If an email address is provided, it passed all the tests
 - Two-thirds of telephone number errors due to wrong # of digits
 - Postal address errors: typically missing 1+ required field
- ⦿ 70.3% of all domains meet all 2009 RAA syntax requirements
 - For all three contact types (Registrant, Administrative, Technical)
 - For all three contact modes (email, telephone, postal address)
- ⦿ Following findings are estimates applicable to the entire gTLD space or respective subgroup

Phase 1 - Conformance to 2009 RAA*, by Contact Mode



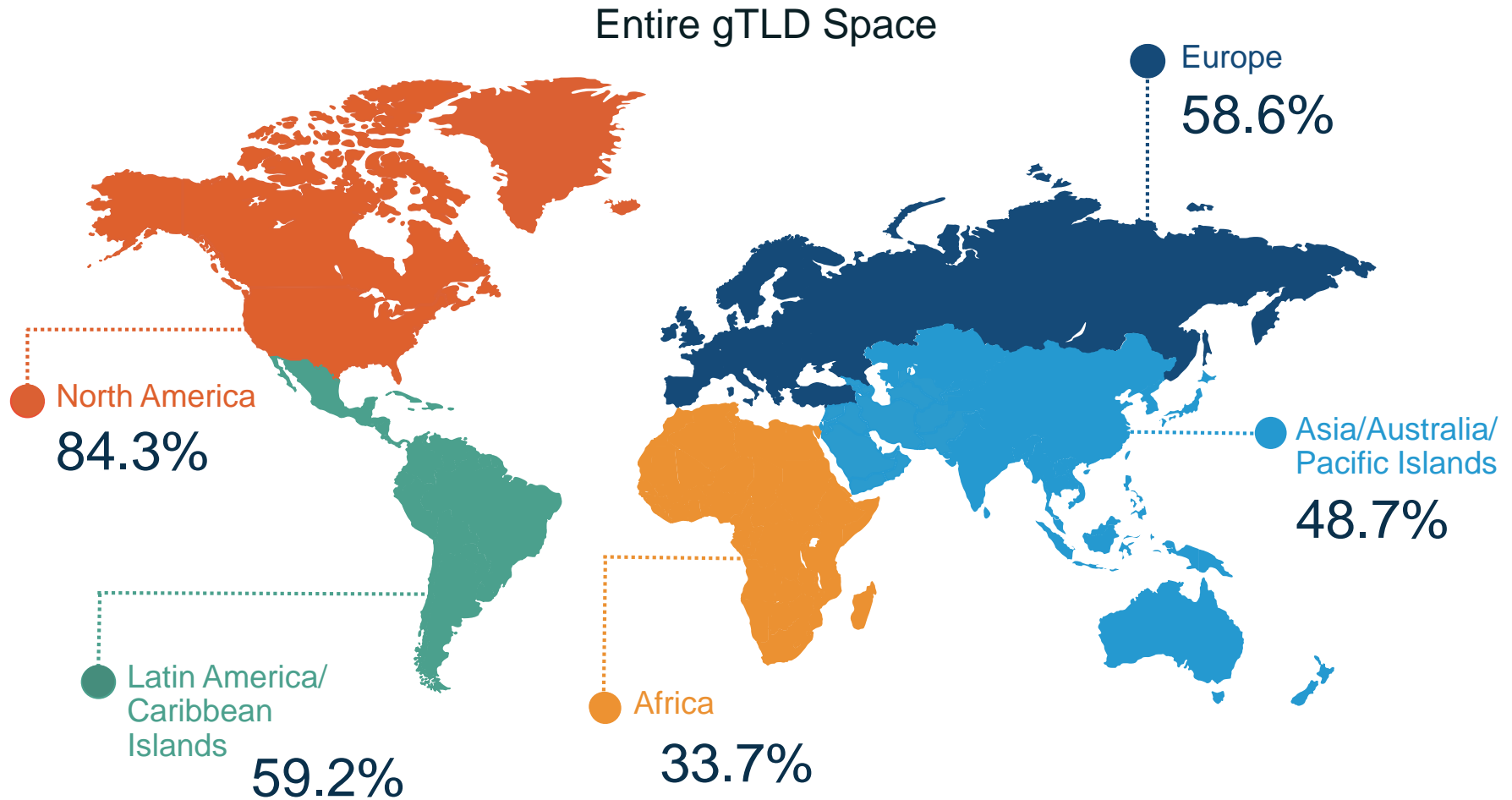
- Contact mode accuracy requires accuracy on all 3 contact types
 - Registrant, Administrative, Technical Contacts
- Overall accuracy requires accuracy on all 3 contact modes and all 3 contact types

Phase 1 - Conformance to 2009 RAA*, by RAA Type



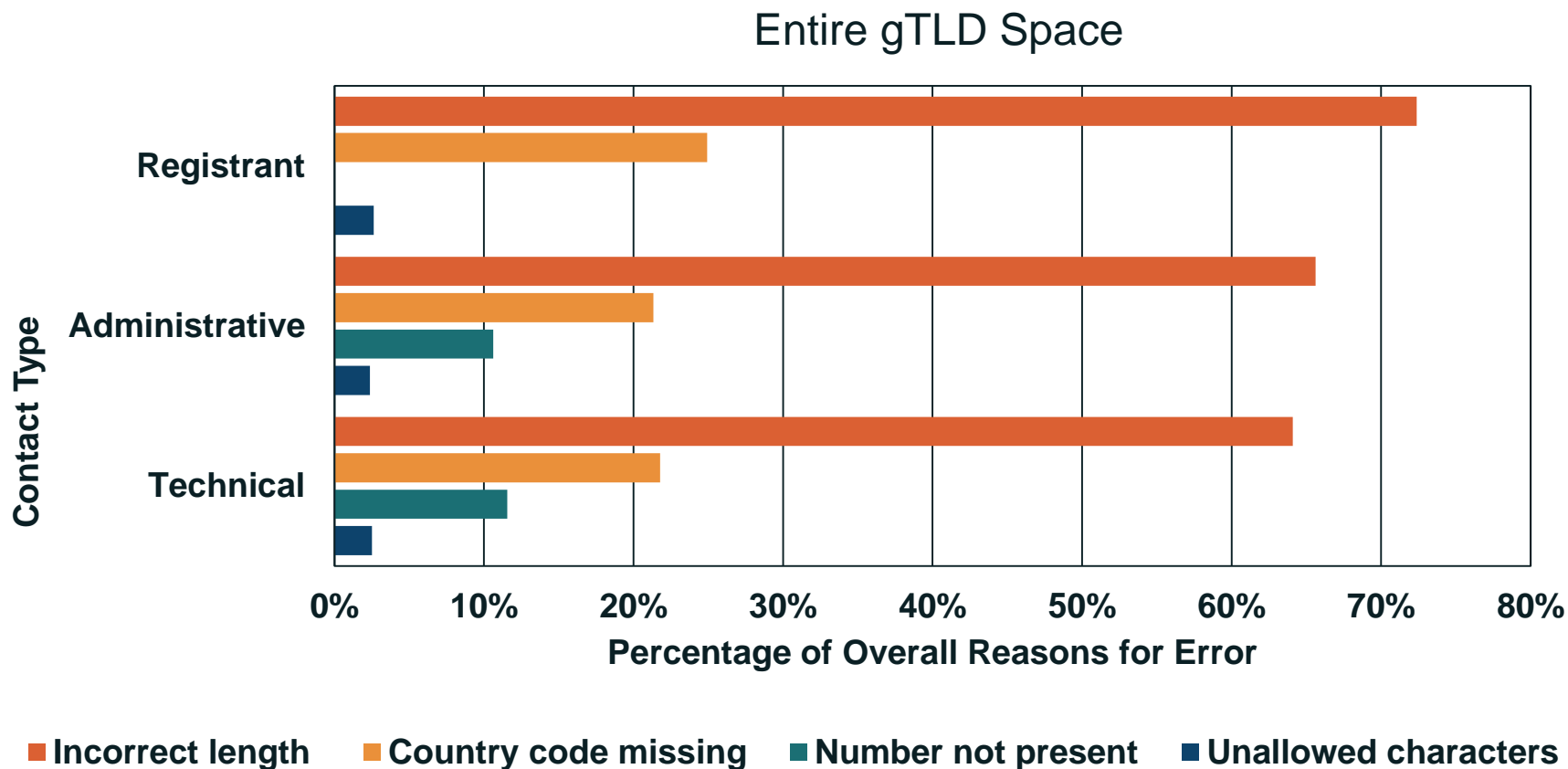
- Accuracy here also requires accuracy on all 3 contact modes and all 3 contact types

Phase 1 – Conformance to 2009 RAA by Region



- Accuracy here also requires accuracy on all 3 contact modes and all 3 contact types

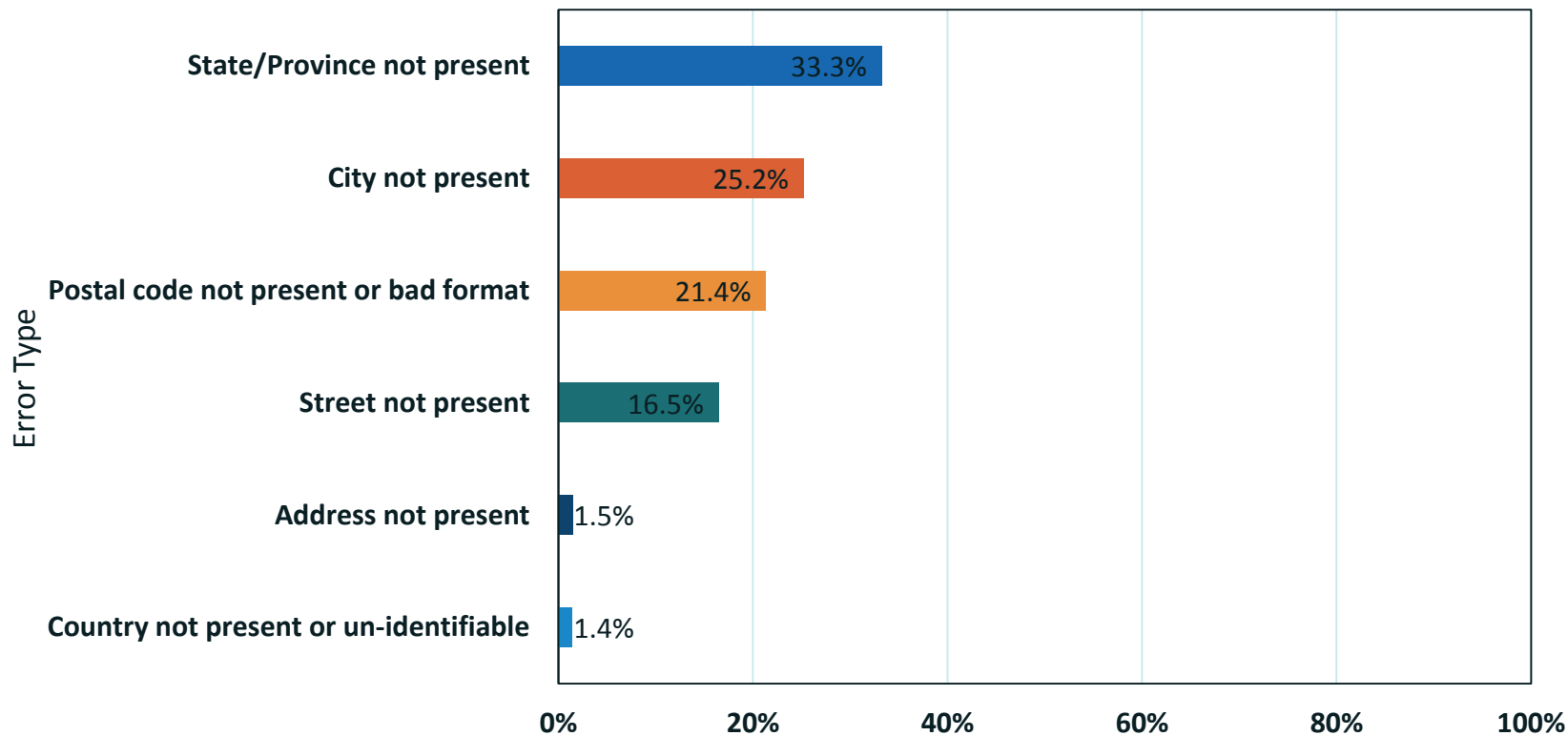
Phase 1 - Reasons for Telephone Error (2009)



Note: "Number not present" error is omitted from the Registrant contact type because it is not a requirement for the Registrant contact type. The "Extension Character" error type has been omitted from this graph because it represents less than 0.1% of errors in each contact type. As a result, the sum of errors shown is slightly less than 100% for each contact type.

Phase 1 - Reasons for Postal Address Error (2009)

Entire gTLD Space



Percent of Overall errors for contact type

Among 9,789 Registrant postal address errors found in the 10,000 record subsample

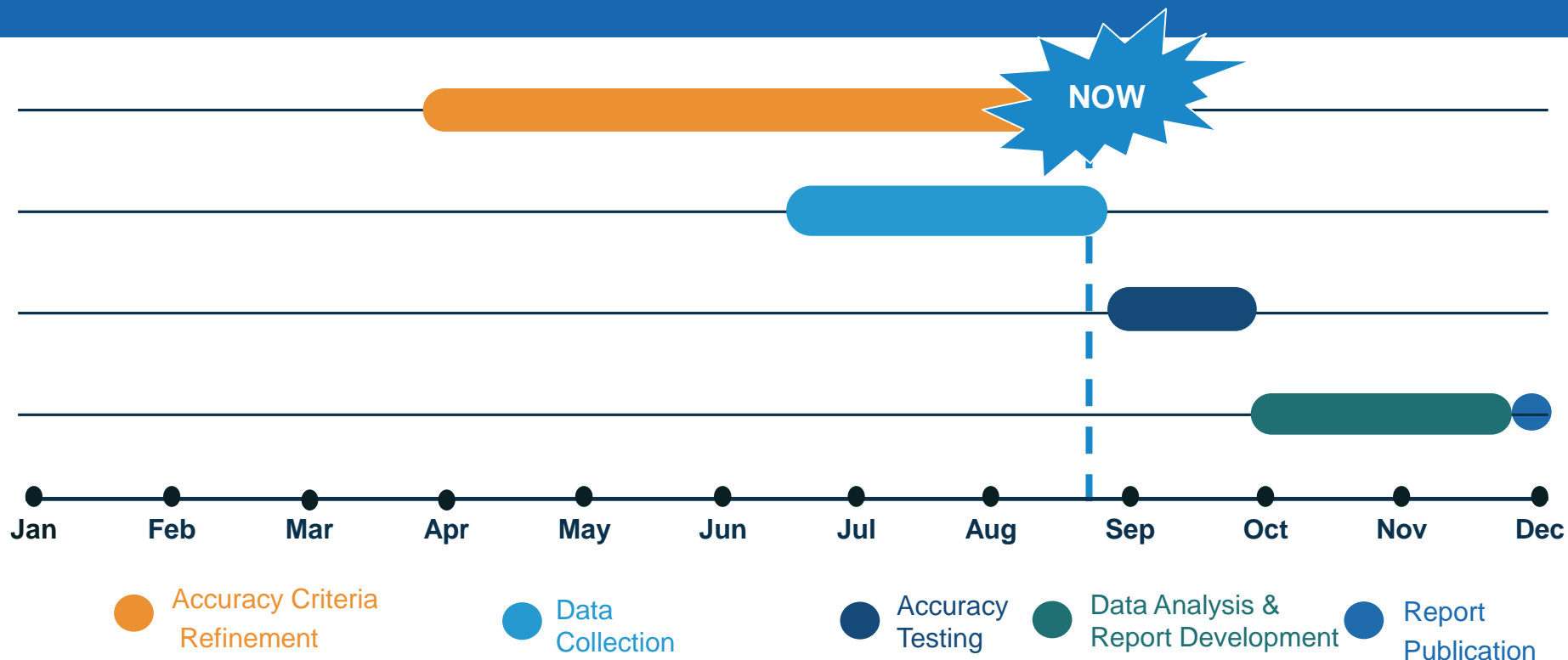
Next Steps: ICANN Contractual Compliance Follow-Up

Next Steps – ICANN Contractual Compliance

- ⦿ Potentially inaccurate records have been provided to ICANN Contractual Compliance
 - ⦿ Due to sample weighting and 2013 requirements, total number of records identified as nonconforming exceeds 30% of 10k subsample
- ⦿ Registrars must investigate and correct inaccurate WHOIS data:
 - Section 3.7.8 of 2009 and 2013 RAA (and WHOIS Accuracy Program Specification)
 - Failure to respond or demonstrate compliance during complaint processing will result in a Notice of Breach
- ⦿ Registrars under 2013 RAA must use WHOIS format and layout required by Registration Data Directory Service Specification
- ⦿ WHOIS inaccuracy and format complaints will follow the Contractual Compliance Approach and Process
- ⦿ ICANN will continue to give priority to complaints submitted by community members

Next Steps: Phase 2

Phase 2, Cycle 1 – Implementation Underway



Phase 2 = Syntax + Operability

Examples of operability tests:

- ⊙ *Email:* Does the email go through / not bounced back?
- ⊙ *Phone:* Does the number ring when dialed?
- ⊙ *Postal:* Is the address deliverable?

Phase 1 Summary

**Phase 1
Syntax Accuracy
Report published
24 August 2015**

**Subsample of
10k records;
Accounted for
regions and RAA
type**

**70% accuracy
rate on all 2009
RAA
requirements**

**Compliance will
conduct follow
up on potentially
inaccurate
records**

**Community
Feedback in 4th
Quarter 2015**

**Phase 2
underway; 1st
Report in
December 2015**

Questions & Answers