



ICANN | 53   
*Buenos Aires*

21-25 JUNE 2015





# At-Large Review Working Party Session

21 June 2015

# Agenda

1

Roles and  
Responsibilities

2

Proposed Timeline

3

Preparatory  
Questions

4

Web Improvements

5

Resources

6

Q&A

# Roles and Responsibilities

# Roles and Responsibilities

## Review Working Party

- Conduct self-assessment
- Assist with tailoring review methodology
- Assist with outreach and engagement
- Input into data collection – online assessment and Interviews
- Provide clarification and factual corrections
- Prepare Review Implementation Plan

## Independent Examiner

- Assess effectiveness of prior review improvements
- Review of documents, records
- Observe proceedings
- Develop and conduct 360 Assessment
- Conduct interviews
- Prepare report
- Engage with stakeholders for clarification and correction

## SIC

- Oversight
- Scope of review
- Confirm Independent Examiner
- Accept Report\*
- Approve Plans\*

\*Prepare Recommendations for Board Action

## Staff

- Prepare RFP
- Run competitive bidding process
- Monitor timeline and resources
- Support review
- Support outreach and engagement
- Manage report and public comment process
- Prepare Review Implementation Plan

# Working Party Activities and Milestones

**Jul 2015 - Oct 2015**

**At-Large Self-Assessment**

**Jul 2015 – Aug 2015**

**Input into Review Methodology**

**Apr 2016 – Oct 2016**

**Input into Data Collection**

- Surveys
- Interviews

**Apr 2016 – Dec 2016**

**Assistance with Outreach and Engagement with Community**

- Webinars
- Blogs
- Videos

**Aug 2016 – Dec 2016**

**Feedback into Independent Examiner's Reports**

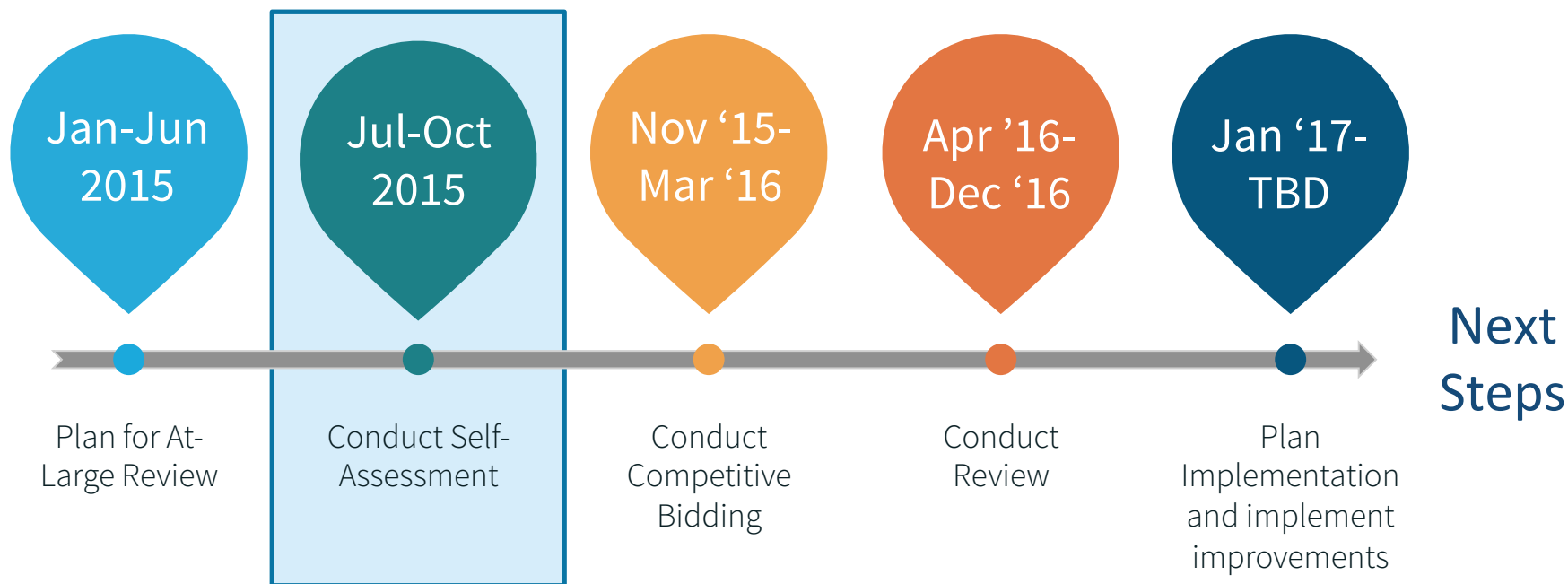
**Jan 2017**

**Prepare Implementation Plan**

A world map where the continents are defined by a complex network of white dots and thin white lines, resembling a social or data network. The background is a solid teal color.

# **Proposed Timeline and Process Improvements**

# Proposed Timeline



## To Summarize

- The At-Large Review Working Party will be engaged from May 2015 through Implementation phase.
- The [At-Large Review Preparatory Questions](#) are posted on the wiki.
- The independent examiner will be appointed in early 2016.
- Planning for implementation will start in 2017; implementation improvements will start upon completion of the planning phase – duration will depend on nature of findings and recommendations.



# Process Improvements

A

Planning phase - clear scope of work & deliverables, self-assessment of implementation progress, tailoring methodology to At-Large - before competitive bidding process



Review Working Party to serve as a liaison between the independent examiner, the At-Large community, the SIC and staff



Early and continuous engagement of the Working Party with the independent examiner



Robust outreach to ensure broad and diverse participation in the review

# Preparatory Questions

# Review Preparatory Questions



Who should be considered a relevant responder in order to evaluate and assess the operation of At-Large?

- Experienced people in At-Large operation?
- Newcomers?
- ICANN Community At-Large?
- Other ICANN structures/groups?



Should their questions be different?



What can At-Large (ALAC, RALOs, ALSes) do to ensure a substantial number of responses are received to a survey?

# Review Preparatory Questions (continued)




Besides ICANN announcements, blogs, email blasts, and social media:

- What other means of communication do you suggest?
- What existing communications or meeting mechanisms should be leveraged?



What would be an appropriate target for completed surveys, based on relevant populations?

# Review Preparatory Questions (continued)

 Who are the key individuals in At-Large (or any other organization) that need to be interviewed for the Review to be considered complete and accurate?



- General target of approximately 20 individuals.
- Please indicate the individuals that would require Language Services during the interview.



What months/periods would not be ideal to conduct the survey or interviews?



How long should the survey remain open?

# Review Preparatory Questions (continued)



If the At-Large/ALAC has performed its own assessment of how effective the implementation of prior review recommendations has been, how has this been documented, if at all?

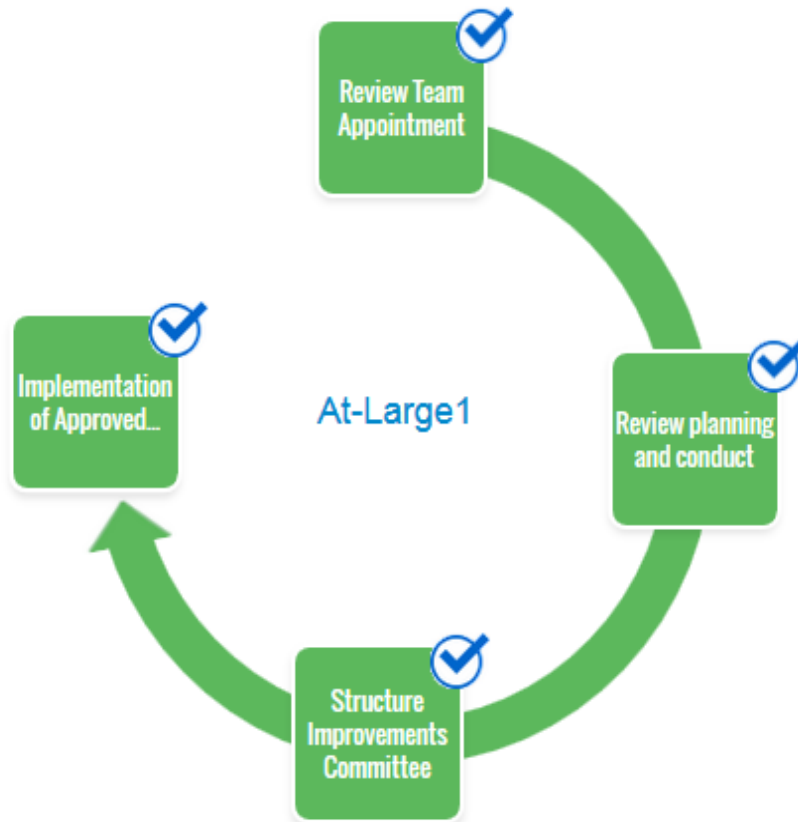


List any significant developments that have impacted, or will impact, the At-Large organization since the last Review.

The image features a world map where the continents are defined by a complex network of white dots and thin white lines. The dots vary in size, and the lines connect them to form a web-like structure. The background is a solid, vibrant orange color. The text 'Web Improvements' is centered over the map in a bold, white, sans-serif font.

# Web Improvements

# Web Improvements



- Easier navigation
- Repository for key documents and actions
- Ability to provide feedback
- Community wiki – convenient means of documenting ongoing review work



A world map where the continents are defined by a complex network of white dots and thin white lines. The dots vary in size, and the lines connect them to form a web-like structure that outlines the major landmasses. The background is a solid, dark blue color.

# Resources

- Public Comment:  
[Proposed Schedule and Process/Operational Improvements for AoC and Organizational Reviews](#)
- [At-Large Review wiki](#)
- [At-Large Review](#) – new page
- [GNSO Review wiki](#)

# Q&A



Thank You