

A dark blue background featuring a network diagram with interconnected nodes and lines, creating a web-like structure. The nodes are represented by circles of varying sizes, and the lines are thin and light blue.

ICANN | ASO

Address Supporting Organization

ASO/NRO Public Session

ICANN 58, Copenhagen, 15 March 2017

ICANN | ASO

Address Supporting Organization

Agenda

1. Welcome/Agenda review
2. Who we are & what we do - Filiz Yilmaz – 15 mins
3. Post-Transition IANA World - John Curran - 30 mins,
4. Accountability @RIPE – Nurani Nimpuno - 30 mins
5. Open mic - 10 mins Questions, comments, interaction with audience

A dark blue background with a network diagram consisting of numerous grey circles of varying sizes connected by thin, light blue lines. The circles are scattered across the frame, with some larger circles acting as hubs. The lines form a complex web of connections.

ICANN | ASO

Address Supporting Organization

Who we are & what we do

Filiz Yilmaz, ASO AC Chair

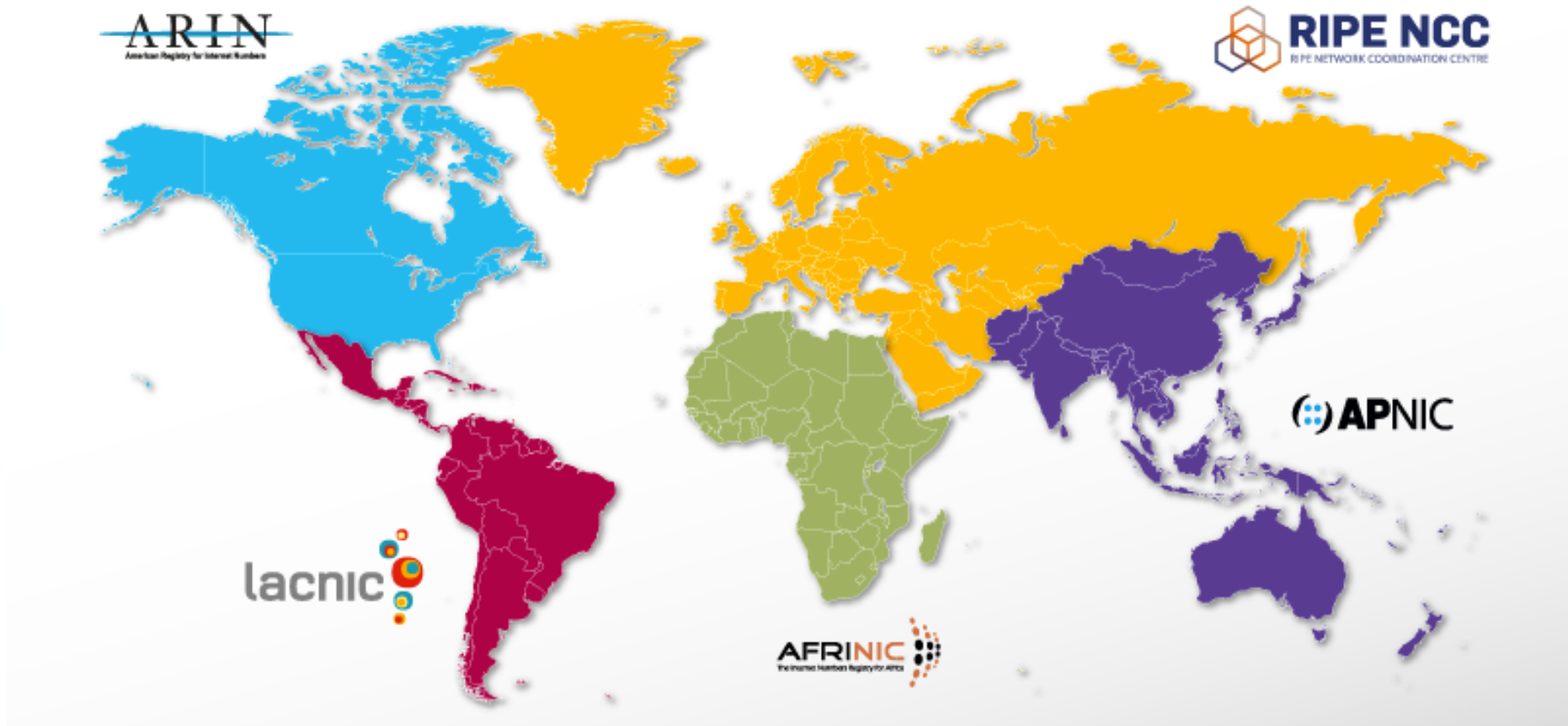
ICANN | ASO

Address Supporting Organization

Who is ASO AC?

- Address Support Organization Address Council/Number Resource Organization Numbers Council (NRO NC)
- The last “N” in ICANN, aka “Numbers”
- ASO: A response to creation of ICANN (1998)
 - Regional Internet Registry system and the Numbers communities predate ICANN
 - To connect ICANN to the already existing and fully functional system of global policy making on Numbers
 - First MoU signed in 1999 with existing RIRs
- Current MoU is from 2004 following establishment of NRO

Who are these Number Communities and RIRs?



ICANN | ASO

Address Supporting Organization

ASO AC Scope and Structure

- Reviewing global policy development process
 - Defining procedures for the selection of individuals to serve on other ICANN bodies
 - Selecting ICANN Board seats 9 and 10
 - Providing advice to the ICANN Board on number resource allocation policy
-
- 15 Members [3 From Each Region]
 - 2 Elected at Large
 - 1 Appointed by RIR Board



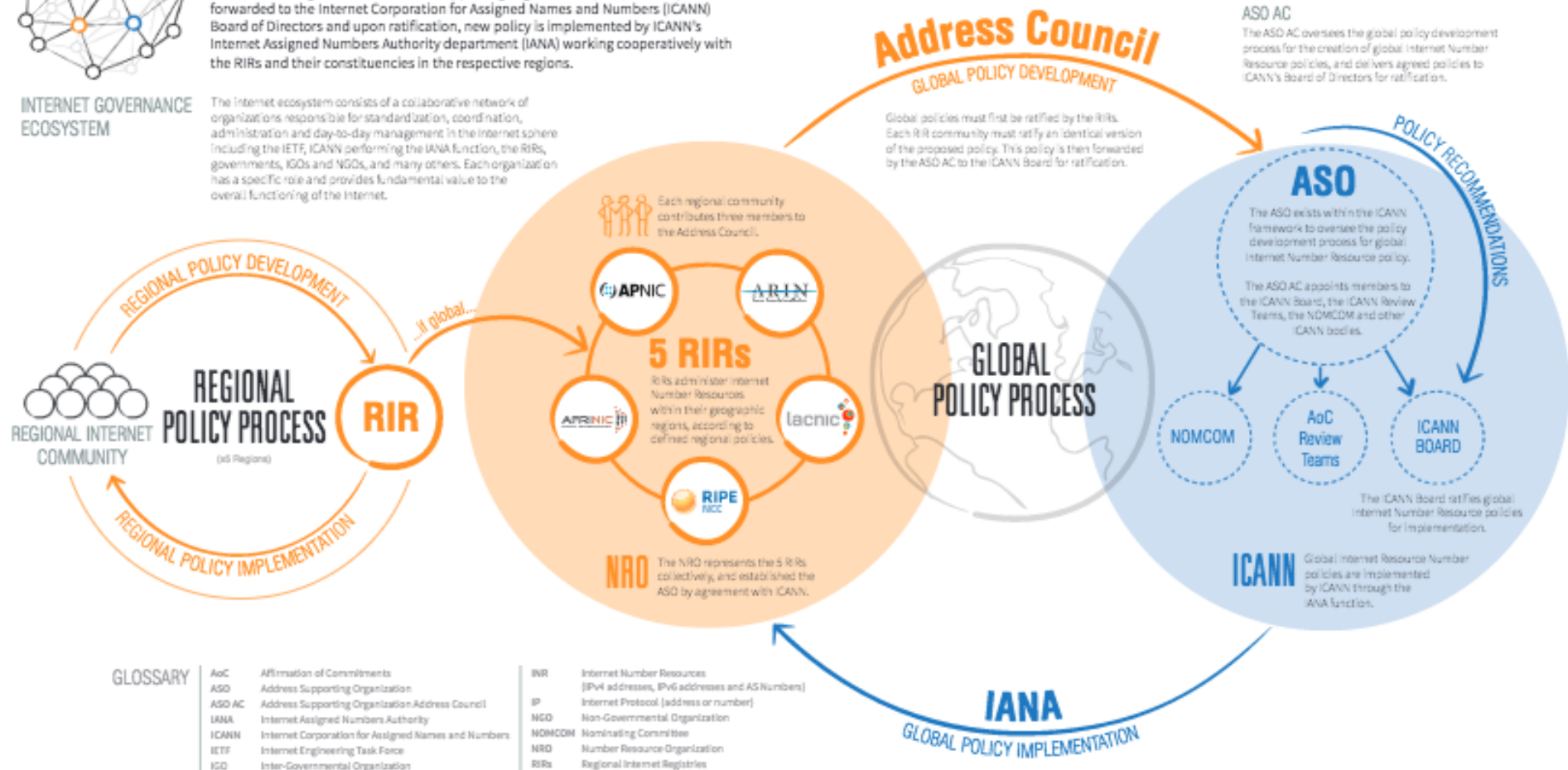
INTERNET NUMBER RESOURCE POLICY LIFE CYCLE



INTERNET GOVERNANCE ECOSYSTEM

Global Internet Number Resource policy is developed through a bottom-up, open, and inclusive approach. Beginning in geographic regions, issues are raised through the Regional Internet Registry (RIR) communities in the Number Resource Organization (NRO) and brought into the Address Supporting Organization (ASO). Global policies are forwarded to the Internet Corporation for Assigned Names and Numbers (ICANN) Board of Directors and upon ratification, new policy is implemented by ICANN's Internet Assigned Numbers Authority department (IANA) working cooperatively with the RIRs and their constituencies in the respective regions.

The Internet ecosystem consists of a collaborative network of organizations responsible for standardization, coordination, administration and day-to-day management in the Internet sphere including the IETF, ICANN performing the IANA function, the RIRs, governments, IGOs and NGOs, and many others. Each organization has a specific role and provides fundamental value to the overall functioning of the Internet.



GLOSSARY

AoC	Affirmation of Commitments
ASO	Address Supporting Organization
ASO AC	Address Supporting Organization Address Council
IANA	Internet Assigned Numbers Authority
ICANN	Internet Corporation for Assigned Names and Numbers
IETF	Internet Engineering Task Force
IGO	Inter-Governmental Organization

INR	Internet Number Resources (IPv4 addresses, IPv6 addresses and AS Numbers)
IP	Internet Protocol (address or number)
NGO	Non-Governmental Organization
NOMCOM	Nominating Committee
NRO	Number Resource Organization
RIRs	Regional Internet Registries

The background of the slide features a light blue network of interconnected nodes and lines, with some nodes highlighted in a darker shade. The ICANN | ASO logo is positioned in the upper left corner.

ICANN | ASO

Address Supporting Organization

Shared Principles of Regional Policy Development Processes

- **Consensus** based decision-making processes
- **Open** to everyone to participate
- All community processes are **transparent**
- All community processes are driven in a **bottom-up** fashion, meaning that policy changes are the result of concerns or initiatives from members of the community

A background network diagram with nodes and connecting lines, some nodes highlighted with larger circles.

ICANN | ASO

Address Supporting Organization

Questions? Comments?